

TEST REPORT

Job No./Report No TR2524633-RV1

Date: 28 August 2024

Page 1 of 104

MN MINIBAR INOVASYON YATIRIM LTD. ŞTİ.

KAYSERİ OSB. MAH. 19. CADDE NO:8 MELİKGAZİ / KAYSERİ

TEL: 0352 504 04 04

To the attention of Serkan İslamoğlu

The following sample(s) was /were submitted and identified by/on behalf of the clients as:

Sample Submitted By : MN MINIBAR INOVASYON YATIRIM LTD. ŞTİ.
Sample Description : MINIBAR
Brand Name : MN BAR, MN COOLING
Model No. : MNK 40C, MNK 40T
Sample Receiving Date : 26 July 2024
Resubmit Date : 29 August 2024
Testing Period : 26 July 2024 ~ 28 August 2024
Test Requested : Selected test(s) as requested by client.
Test Method : Please refer to next page(s)
Test Result(s) : Please refer to next page(s)

Conclusion : Based on the performed tests on selected part of submitted samples, the results of Lead, Mercury, Cadmium, Hexavalent chromium, Polybrominated biphenyls (PBB), Polybrominated diphenyl ethers (PBDE), Bis(2-ethylhexyl) phthalate (DEHP), Butyl benzyl phthalate (BBP), Dibutyl phthalate (DBP), and Diisobutyl phthalate (DIBP) comply with the limits as set by Directive (EU) 2015/863 amending Annex II to Directive 2011/65/EU.

"This document is issued by the Company subject to its General Conditions of Service printed overleaf, available on request or accessible at www.sgs.com/terms_and_conditions and, for electronic format documents, subject to Terms and Conditions for Electronic Documents at www.sgs.com/terms-and-conditions/terms-e-document. Attention is drawn to the limitation of liability, indemnification and jurisdiction issues defined therein. Any holder of this document is advised that information contained hereon reflects the Company's findings at the time of its intervention only and within the limits of Client's instructions, if any. The Company's sole responsibility is to its Client and this document does not exonerate parties to a transaction from exercising all their rights and obligations under the transaction documents. Unsigned test reports are considered invalid. This document cannot be reproduced except in full, without prior written approval of the Company. Any unauthorized alteration, forgery or falsification of the content or appearance of this document is unlawful and offenders may be prosecuted to the fullest extent of the law. If it is important for the test result, the environmental conditions are specified in the test result table.

SGS applied shared risk decision rule.

SGS does not verify authenticity of any Brand/Trademark of products. Buyers must check if the product is genuine with the Brand/Trademark owner directly.

Turkish Accreditation Agency (TURKAK) is a signatory to the European co-operation for Accreditation (EA) Multilateral Agreement (MLA) and to the International Laboratory Accreditation Cooperation (ILAC) Mutual Recognition Arrangement (MRA) for the recognition of test reports.

Unless otherwise stated the results shown in this test report refer only to the sample(s) tested. Unless further specified in an individual contract the sample(s) retention time is 30 days."

In this Test Report tests marked (1) are included in the TURKAK Accreditation Scope of this Laboratory.

TEST REPORT

Job No./Report No TR2524633-RV1

Date: 28 August 2024

Page 2 of 104

The test results relate to the tested items only.
Test reports without SGS seal and authorized signatures are invalid.

Issued in Istanbul
Signed for and on behalf of
SGS Supervise Gözetme Etüd
Kontrol Servisleri A.Ş.

**IN THIS REVISED-1 REPORT, TEST RESULTS WERE DETAILED.
THIS REPORT SUPERSEDES OUR REPORT NO: TR2524633 DATED 28.08.2024.**

RAVİYE MUTLU
Customer Services Supervisor

Bora Şirinbilek
Hardline & CPCH Testing Services Manager



TEST REPORT

Job No./Report No TR2524633-RV1

Date: 28 August 2024

Page 3 of 104

Test Part Description:
CONCLUSION

1		MINI BAR	
1.1		White-black Plastic Mini bar sticker	PASS
1.2		Blue Plastic Mini bar tape	PASS
1.3		Black Metal Mini bar main floor	PASS
1.4		Silver Metal Mini bar back main floor	PASS
1.5		White Plastic Mini bar inner main	PASS
1.6		Beige Sponge-Foam Mini bar inner sponge foam	PASS
1.7		Beige Sponge-Foam Mini bar inner sponge	PASS
1.8		Transparent Plastic Mini bar pipe	PASS
1.9		Grey Plastic Mini bar back filling	PASS
1.10		Silver Metal Mini bar connection device	PASS
1.11		Black Plastic Mini bar water tank	PASS
1.12		White Plastic Mini bar inner shelf	PASS
1.13		Transparent Plastic Mini bar inner shelf	PASS
1.14		Black Plastic Mini bar feet	PASS
1.15		Black Plastic Mini bar back ring	PASS
1.16		Silver Metal Mini bar fixing screw	PASS
1.17		Silver Metal Mini bar fixing screw	PASS
1.18		Silver Metal Mini bar fixing screw	PASS
1.19		Silver Metal Mini bar fixing screw	PASS
1.20		Silver Metal Mini bar fixing screw	PASS
1.21		Silver Metal Mini bar fixing screw	PASS
1.22		Silver Metal Mini bar fixing screw	PASS
1.23		Silver Metal Mini bar nut	PASS
1.24		Silver Metal Mini bar nut	PASS
1.25		Silver Metal Mini bar stamp	PASS
1.26		Black Metal Mini bar stamp	PASS
2		Mini Bar Front Cover	
2.1		Black Metal Mini bar front cover main	PASS
2.2		Black Plastic Mini bar front cover top slat	PASS
2.3		White Plastic Mini bar front cover back main	PASS
2.4		Beige Sponge-Foam Mini bar front cover inner foam	PASS
2.5		Black Plastic Mini bar front cover gasket	PASS
2.6		Black Metal Mini bar front cover magnet	PASS
2.7		Black silver Metal Mini bar front cover label	PASS
3		Mini Bar Condenser	
3.1		Black Metal Mini bar condenser pipe	PASS
3.2		Black Metal Mini bar condenser wire	PASS
3.3		Bronze Metal Mini bar condenser tank	PASS
3.4		Bronze Metal Mini bar condenser pipe	PASS
3.5		Bronze Metal Mini bar condenser wire	PASS
3.6		Black Plastic Mini bar condenser macaron	PASS
3.7		Grey Plastic Mini bar condenser macaron	PASS

TEST REPORT

Job No./Report No TR2524633-RV1

Date: 28 August 2024

Page 4 of 104

Test Part Description:
CONCLUSION

Test Part Description:		CONCLUSION
4	Mini Bar Thermostat	
4.1	Black Plastic Mini bar thermostat box	PASS
4.2	Black Plastic Mini bar thermostat cover	PASS
4.3	Silver Metal Mini bar thermostat wire	PASS
4.4	Black Plastic Mini bar thermostat button	PASS
4.5	Silver Metal Mini bar thermostat button shaft	PASS
4.6	Silver Metal Mini bar thermostat button shaft nut	PASS
4.7	Silver Metal Mini bar thermostat frame	PASS
4.8	Silver Metal Mini bar thermostat frame hook	PASS
4.9	White Plastic Mini bar thermostat cover	PASS
4.10	White Plastic Mini bar thermostat frame inner	PASS
4.11	Brown Plastic Mini bar thermostat frame inner socket	PASS
4.12	Gold Metal Mini bar thermostat frame inner socket end	PASS
4.13	Bronze Metal Mini bar thermostat frame inner ring	PASS
4.14	Silver Metal Mini bar thermostat frame inner bottom cover	PASS
4.15	Silver Metal Mini bar thermostat frame inner spring	PASS
4.16	Silver Metal Mini bar thermostat frame screw	PASS
4.17	White-black Plastic Mini bar thermostat sticker	PASS
5	Mini Bar Plug (P302)	
5.1	Black Plastic Mini bar plug main	PASS
5.2	Black Plastic Mini bar plug inner	PASS
5.3	Silver Metal Mini bar plug conductive tip	PASS
5.4	Silver Metal Mini bar plug conductive strip	PASS
5.5	Black Plastic Mini bar plug macaron	PASS
5.6	Yellow green Plastic Mini bar plug cable	PASS
5.7	Blue Plastic Mini bar plug cable	PASS
5.8	Brown Plastic Mini bar plug cable	PASS
5.9	Bronze Metal Mini bar plug cable wire	PASS
6	Mini Bar Cable	
6.1	White Plastic Mini bar cable macaron	PASS
6.2	Blue Plastic Mini bar cable	PASS
6.3	Brown Plastic Mini bar cable	PASS
6.4	Black Plastic Mini bar cable	PASS
6.5	Red Plastic Mini bar cable	PASS
6.6	Yellow green Plastic Mini bar cable	PASS
6.7	Whit- red Textile Mini bar cable	PASS
6.8	White Textile Mini bar cable	PASS
6.9	White-black Textile Mini bar cable	PASS
6.10	Bronze Metal Mini bar cable wire	PASS
6.11	Black Textile Mini bar cable tape	PASS
6.12	White Paper Mini bar cable tape	PASS
6.13	White Plastic Mini bar cable socket	PASS
6.14	White Plastic Mini bar cable socket	PASS
6.15	White Plastic Mini bar cable socket	PASS

TEST REPORT

Job No./Report No TR2524633-RV1

Date: 28 August 2024

Page 5 of 104

Test Part Description:
CONCLUSION

6.16	White Plastic Mini bar cable socket	PASS
6.17	Red Plastic Mini bar cable socket	PASS
6.18	Black Plastic Mini bar cable macaron	PASS
6.19	Black Metal Mini bar cable ring	PASS
6.20	Silver Metal Mini bar cable socket tip	PASS
6.21	Silver Metal Mini bar cable socket tip	PASS
6.22	Silver Metal Mini bar cable socket tip	PASS
6.23	Gold Metal Mini bar cable socket tip	PASS
6.24	Gold Metal Mini bar cable socket tip	PASS
6.25	Bronze Metal Mini bar cable socket tip	PASS
7	Mini Bar Board (5645538700)	
7.1	Black Plastic Mini bar board top cover (554072)	PASS
7.2	Black Plastic Mini bar board bottom cover (5540731)	PASS
7.3	Black Plastic Mini bar board bottom side cover (554072)	PASS
7.4	Silver Metal Mini bar board bottom cover inner panel	PASS
7.5	White Plastic Mini bar board bottom cover inner tape	PASS
7.6	Black Plastic Mini bar board protective clamp	PASS
7.7	Green Plastic Mini bar board	PASS
7.8	Silver Metal Mini bar board socket	PASS
7.9	Silver Metal Mini bar board socket	PASS
7.10	Grey Plastic Mini bar board relay	PASS
7.11	Blue Plastic Mini bar board relay	PASS
7.12	Green Ceramic Mini bar board resistor	PASS
7.13	Orange Ceramic Mini bar board resistor	PASS
7.14	Black-silver Plastic Mini bar board condenser protective gelatine	PASS
7.15	Silver Metal Mini bar board condenser	PASS
7.16	Silver Metal Mini bar board condenser end	PASS
7.17	Brown-white Plastic Mini bar board condenser protective gelatine	PASS
7.18	Silver Metal Mini bar board condenser	PASS
7.19	Silver Metal Mini bar board condenser feet	PASS
7.20	Black Plastic Mini bar board condenser bottom cover	PASS
7.21	Silver black Plastic Mini bar board condenser	PASS
7.22	Black Plastic Mini bar board coil protective macaron	PASS
7.23	Black Metal Mini bar board coil	PASS
7.24	Bronze Metal Mini bar board coil wire	PASS
7.25	Black Ceramic Mini bar board integrated	PASS
7.26	Black Ceramic Mini bar board integrated	PASS
7.27	Black Ceramic Mini bar board microchip	PASS
7.28	Black-white Ceramic Mini bar board resistor	PASS
7.29	Brown Ceramic Mini bar board resistor	PASS
7.30	Multicolor Ceramic Mini bar board resistance	PASS
7.31	Multicolor Ceramic Mini bar board resistance	PASS
7.32	White Plastic Mini bar board socket	PASS
7.33	Silver Metal Mini bar board socket end	PASS

TEST REPORT

Job No./Report No TR2524633-RV1

Date: 28 August 2024

Page 6 of 104

Test Part Description:
CONCLUSION

7.34	Yellow Plastic Mini bar board silicone	PASS
7.35	Brown Plastic Mini bar board coil protective cover	PASS
7.36	Green Metal Mini bar board coil ring	PASS
7.37	Bronze Metal Mini bar board coil wire	PASS
8	Mini Bar Compressor (24324453)	
8.1	Black Metal Mini bar compressor main floor	PASS
8.2	Black Plastic Mini bar compressor feet	PASS
8.3	Silver Metal Mini bar compressor tube	PASS
8.4	Bronze Metal Mini bar compressor tube copper	PASS
8.5	Silver Metal Mini bar compressor tube spring	PASS
8.6	Silver Metal Mini bar compressor pin	PASS
8.7	Black Metal Mini bar compressor spring	PASS
8.8	Black Metal Mini bar compressor fixing screw	PASS
8.9	Silver Metal Mini bar compressor ring	PASS
8.10	Silver Metal Mini bar compressor wire	PASS
8.11	White Plastic Mini bar compressor pipe	PASS
8.12	White Plastic Mini bar compressor protective gelatine	PASS
8.13	White Plastic Mini bar compressor stopper	PASS
8.14	White Plastic Mini bar compressor stopper	PASS
8.15	White Plastic Mini bar compressor fixing apparatus	PASS
8.16	Black Metal Mini bar compressor filter	PASS
8.17	Black Metal Mini bar compressor fixing screw	PASS
8.18	Black Metal Mini bar compressor fixing screw	PASS
8.19	Black Metal Mini bar compressor clamp	PASS
8.20	Silver Metal Mini bar compressor panel	PASS
8.21	Green Plastic Mini bar compressor panel fixing gasket	PASS
8.22	Black Metal Mini bar compressor panel fixing stamp	PASS
8.23	Silver Metal Mini bar compressor engine main	PASS
8.24	Silver Metal Mini bar compressor engine piston rod	PASS
8.25	Silver Metal Mini bar compressor engine fixing strip	PASS
8.26	Black Metal Mini bar compressor engine fixing strip	PASS
8.27	White Plastic Mini bar compressor engine coil hopper	PASS
8.28	White Plastic Mini bar compressor engine coil protective wrap	PASS
8.29	Silver Metal Mini bar compressor engine coil frame	PASS
8.30	White Textile Mini bar compressor engine outer cable	PASS
8.31	White-black Textile Mini bar compressor engine cable	PASS
8.32	White Textile Mini bar compressor engine cable	PASS
8.33	White-red Textile Mini bar compressor engine cable	PASS
8.34	Transparent Plastic Mini bar compressor engine cable gelatine	PASS
8.35	Bronze Metal Mini bar compressor engine cable wire	PASS
8.36	White Plastic Mini bar compressor engine cable socket	PASS
8.37	White Plastic Mini bar compressor engine cable socket end	PASS
8.38	Silver Metal Mini bar compressor engine cable socket	PASS
8.39	Bronze Metal Mini bar compressor engine coil wire	PASS

TEST REPORT

Job No./Report No TR2524633-RV1

Date: 28 August 2024

Page 7 of 104

Test Item(s):	RESULTS		
	1.1	1.2	1.3
Cadmium (Cd)	ND	ND	ND
Lead (Pb)	ND	ND	ND
Mercury (Hg)	ND	ND	ND
Hexavalent Chromium (Cr(VI)) (ppm) (for non metal)	ND	ND	NA
Hexavalent Chromium (Cr(VI)) (µg/cm ²) (for metal)	NA	NA	ND
Flame Retardants			
Sum of PBBs	ND	ND	NA
Monobromobiphenyl	ND	ND	NA
Dibromobiphenyl	ND	ND	NA
Tribromobiphenyl	ND	ND	NA
Tetrabromobiphenyl	ND	ND	NA
Pentabromobiphenyl	ND	ND	NA
Hexabromobiphenyl	ND	ND	NA
Heptabromobiphenyl	ND	ND	NA
Octabromobiphenyl	ND	ND	NA
Nonabromobiphenyl	ND	ND	NA
Decabromobiphenyl	ND	ND	NA
Sum of PBDEs	ND	ND	NA
Monobromodiphenyl ether	ND	ND	NA
Dibromodiphenyl ether	ND	ND	NA
Tribromodiphenyl ether	ND	ND	NA
Tetrabromodiphenyl ether	ND	ND	NA
Pentabromodiphenyl ether	ND	ND	NA
Hexabromodiphenyl ether	ND	ND	NA
Heptabromodiphenyl ether	ND	ND	NA
Octabromodiphenyl ether	ND	ND	NA
Nonabromodiphenyl ether	ND	ND	NA
Decabromodiphenyl ether	ND	ND	NA
Phthalates	ND	ND	NA
Dibutyl phthalate (DBP)	ND	ND	NA
Butyl benzyl phthalate (BBP)	ND	ND	NA
Bis (2-ethylhexyl) phthalate (DEHP)	ND	ND	NA
Diisobutyl Phthalates (DIBP)	ND	ND	NA

Remarks:	ppm = Parts per million based on dry weight of sample (1 mg/kg = 0.0001%)		
	µg/cm ² = Microgram per square centimeter		
	mg/kg with 50 cm ² = Milligram per kilogram with 50 square centimetre		
	ND = Not detected (<MDL)	NA = Not applicable	NR = Not requested
	MDL = Method Detection Limit		

TEST REPORT

Job No./Report No TR2524633-RV1

Date: 28 August 2024

Page 8 of 104

Test Item(s):	RESULTS		
	1.4	1.5	1.6
Cadmium (Cd)	ND	ND	ND
Lead (Pb)	ND	ND	ND
Mercury (Hg)	ND	ND	ND
Hexavalent Chromium (Cr(VI)) (ppm) (for non metal)	NA	ND	ND
Hexavalent Chromium (Cr(VI)) (µg/cm ²) (for metal)	ND	NA	NA
Flame Retardants			
Sum of PBBs	NA	ND	ND
Monobromobiphenyl	NA	ND	ND
Dibromobiphenyl	NA	ND	ND
Tribromobiphenyl	NA	ND	ND
Tetrabromobiphenyl	NA	ND	ND
Pentabromobiphenyl	NA	ND	ND
Hexabromobiphenyl	NA	ND	ND
Heptabromobiphenyl	NA	ND	ND
Octabromobiphenyl	NA	ND	ND
Nonabromobiphenyl	NA	ND	ND
Decabromobiphenyl	NA	ND	ND
Sum of PBDEs	NA	ND	ND
Monobromodiphenyl ether	NA	ND	ND
Dibromodiphenyl ether	NA	ND	ND
Tribromodiphenyl ether	NA	ND	ND
Tetrabromodiphenyl ether	NA	ND	ND
Pentabromodiphenyl ether	NA	ND	ND
Hexabromodiphenyl ether	NA	ND	ND
Heptabromodiphenyl ether	NA	ND	ND
Octabromodiphenyl ether	NA	ND	ND
Nonabromodiphenyl ether	NA	ND	ND
Decabromodiphenyl ether	NA	ND	ND
Phthalates	NA	ND	ND
Dibutyl phthalate (DBP)	NA	ND	ND
Butyl benzyl phthalate (BBP)	NA	ND	ND
Bis (2-ethylhexyl) phthalate (DEHP)	NA	ND	ND
Diisobutyl Phthalates (DIBP)	NA	ND	ND

Remarks:	ppm = Parts per million based on dry weight of sample (1 mg/kg = 0.0001%)		
	µg/cm ² = Microgram per square centimeter		
	mg/kg with 50 cm ² = Milligram per kilogram with 50 square centimetre		
	ND = Not detected (<MDL)	NA = Not applicable	NR = Not requested
	MDL = Method Detection Limit		

AB-0690-T

TR2524633-RV1

08-24

TEST REPORT

Job No./Report No TR2524633-RV1

Date: 28 August 2024

Page 9 of 104

"This document is issued by the Company subject to its General Conditions of Service printed overleaf, available on request or accessible at www.sgs.com/terms_and_conditions and, for electronic format documents, subject to Terms and Conditions for Electronic Documents at www.sgs.com/terms-and-conditions/terms-e-document. Attention is drawn to the limitation of liability, indemnification and jurisdiction issues defined therein. Any holder of this document is advised that information contained hereon reflects the Company's findings at the time of its intervention only and within the limits of Client's instructions, if any. The Company's sole responsibility is to its Client and this document does not exonerate parties to a transaction from exercising all their rights and obligations under the transaction documents. Unsigned test reports are considered invalid. This document cannot be reproduced except in full, without prior written approval of the Company. Any unauthorized alteration, forgery or falsification of the content or appearance of this document is unlawful and offenders may be prosecuted to the fullest extent of the law. If it is important for the test result, the environmental conditions are specified in the test result table.

SGS applied shared risk decision rule.

SGS does not verify authenticity of any Brand/Trademark of products. Buyers must check if the product is genuine with the Brand/Trademark owner directly.

Turkish Accreditation Agency (TURKAK) is a signatory to the European co-operation for Accreditation (EA) Multilateral Agreement (MLA) and to the International Laboratory Accreditation Cooperation (ILAC) Mutual Recognition Arrangement (MRA) for the recognition of test reports.

Unless otherwise stated the results shown in this test report refer only to the sample(s) tested. Unless further specified in an individual contract the sample(s) retention time is 30 days."

In this Test Report tests marked (1) are included in the TURKAK Accreditation Scope of this Laboratory.

TEST REPORT

Job No./Report No TR2524633-RV1

Date: 28 August 2024

Page 10 of 104

Test Item(s):	RESULTS		
	1.7	1.8	1.9
Cadmium (Cd)	ND	ND	ND
Lead (Pb)	ND	ND	ND
Mercury (Hg)	ND	ND	ND
Hexavalent Chromium (Cr(VI)) (ppm) (for non metal)	ND	ND	ND
Hexavalent Chromium (Cr(VI)) (µg/cm ²) (for metal)	NA	NA	NA
Flame Retardants			
Sum of PBBs	ND	ND	ND
Monobromobiphenyl	ND	ND	ND
Dibromobiphenyl	ND	ND	ND
Tribromobiphenyl	ND	ND	ND
Tetrabromobiphenyl	ND	ND	ND
Pentabromobiphenyl	ND	ND	ND
Hexabromobiphenyl	ND	ND	ND
Heptabromobiphenyl	ND	ND	ND
Octabromobiphenyl	ND	ND	ND
Nonabromobiphenyl	ND	ND	ND
Decabromobiphenyl	ND	ND	ND
Sum of PBDEs	ND	ND	ND
Monobromodiphenyl ether	ND	ND	ND
Dibromodiphenyl ether	ND	ND	ND
Tribromodiphenyl ether	ND	ND	ND
Tetrabromodiphenyl ether	ND	ND	ND
Pentabromodiphenyl ether	ND	ND	ND
Hexabromodiphenyl ether	ND	ND	ND
Heptabromodiphenyl ether	ND	ND	ND
Octabromodiphenyl ether	ND	ND	ND
Nonabromodiphenyl ether	ND	ND	ND
Decabromodiphenyl ether	ND	ND	ND
Phthalates	ND	ND	ND
Dibutyl phthalate (DBP)	ND	ND	ND
Butyl benzyl phthalate (BBP)	ND	ND	ND
Bis (2-ethylhexyl) phthalate (DEHP)	ND	ND	ND
Diisobutyl Phthalates (DIBP)	ND	ND	ND

Remarks:	ppm = Parts per million based on dry weight of sample (1 mg/kg = 0.0001%)		
	µg/cm ² = Microgram per square centimeter		
	mg/kg with 50 cm ² = Milligram per kilogram with 50 square centimetre		
	ND = Not detected (<MDL)	NA = Not applicable	NR = Not requested
	MDL = Method Detection Limit		

TEST REPORT

Job No./Report No TR2524633-RV1

Date: 28 August 2024

Page 11 of 104

Test Item(s):	RESULTS		
	1.10	1.11	1.12
Cadmium (Cd)	ND	ND	ND
Lead (Pb)	ND	ND	ND
Mercury (Hg)	ND	ND	ND
Hexavalent Chromium (Cr(VI)) (ppm) (for non metal)	NA	ND	ND
Hexavalent Chromium (Cr(VI)) ($\mu\text{g}/\text{cm}^2$) (for metal)	ND	NA	NA
Flame Retardants			
Sum of PBBs	NA	ND	ND
Monobromobiphenyl	NA	ND	ND
Dibromobiphenyl	NA	ND	ND
Tribromobiphenyl	NA	ND	ND
Tetrabromobiphenyl	NA	ND	ND
Pentabromobiphenyl	NA	ND	ND
Hexabromobiphenyl	NA	ND	ND
Heptabromobiphenyl	NA	ND	ND
Octabromobiphenyl	NA	ND	ND
Nonabromobiphenyl	NA	ND	ND
Decabromobiphenyl	NA	ND	ND
Sum of PBDEs	NA	ND	ND
Monobromodiphenyl ether	NA	ND	ND
Dibromodiphenyl ether	NA	ND	ND
Tribromodiphenyl ether	NA	ND	ND
Tetrabromodiphenyl ether	NA	ND	ND
Pentabromodiphenyl ether	NA	ND	ND
Hexabromodiphenyl ether	NA	ND	ND
Heptabromodiphenyl ether	NA	ND	ND
Octabromodiphenyl ether	NA	ND	ND
Nonabromodiphenyl ether	NA	ND	ND
Decabromodiphenyl ether	NA	ND	ND
Phthalates	NA	ND	ND
Dibutyl phthalate (DBP)	NA	ND	ND
Butyl benzyl phthalate (BBP)	NA	ND	ND
Bis (2-ethylhexyl) phthalate (DEHP)	NA	ND	ND
Diisobutyl Phthalates (DIBP)	NA	ND	ND

Remarks:	ppm = Parts per million based on dry weight of sample (1 mg/kg = 0.0001%)		
	$\mu\text{g}/\text{cm}^2$ = Microgram per square centimeter		
	mg/kg with 50 cm ² = Milligram per kilogram with 50 square centimetre		
	ND = Not detected (<MDL)	NA = Not applicable	NR = Not requested
	MDL = Method Detection Limit		

TEST REPORT

Job No./Report No TR2524633-RV1

Date: 28 August 2024

Page 12 of 104

Test Item(s):	RESULTS		
	1.13	1.14	1.15
Cadmium (Cd)	ND	ND	ND
Lead (Pb)	ND	ND	ND
Mercury (Hg)	ND	ND	ND
Hexavalent Chromium (Cr(VI)) (ppm) (for non metal)	ND	ND	ND
Hexavalent Chromium (Cr(VI)) ($\mu\text{g}/\text{cm}^2$) (for metal)	NA	NA	NA
Flame Retardants			
Sum of PBBs	ND	ND	ND
Monobromobiphenyl	ND	ND	ND
Dibromobiphenyl	ND	ND	ND
Tribromobiphenyl	ND	ND	ND
Tetrabromobiphenyl	ND	ND	ND
Pentabromobiphenyl	ND	ND	ND
Hexabromobiphenyl	ND	ND	ND
Heptabromobiphenyl	ND	ND	ND
Octabromobiphenyl	ND	ND	ND
Nonabromobiphenyl	ND	ND	ND
Decabromobiphenyl	ND	ND	ND
Sum of PBDEs	ND	ND	ND
Monobromodiphenyl ether	ND	ND	ND
Dibromodiphenyl ether	ND	ND	ND
Tribromodiphenyl ether	ND	ND	ND
Tetrabromodiphenyl ether	ND	ND	ND
Pentabromodiphenyl ether	ND	ND	ND
Hexabromodiphenyl ether	ND	ND	ND
Heptabromodiphenyl ether	ND	ND	ND
Octabromodiphenyl ether	ND	ND	ND
Nonabromodiphenyl ether	ND	ND	ND
Decabromodiphenyl ether	ND	ND	ND
Phthalates	ND	ND	ND
Dibutyl phthalate (DBP)	ND	ND	ND
Butyl benzyl phthalate (BBP)	ND	ND	ND
Bis (2-ethylhexyl) phthalate (DEHP)	ND	ND	ND
Diisobutyl Phthalates (DIBP)	ND	ND	ND

Remarks:	ppm = Parts per million based on dry weight of sample (1 mg/kg = 0.0001%)		
	$\mu\text{g}/\text{cm}^2$ = Microgram per square centimeter		
	mg/kg with 50 cm ² = Milligram per kilogram with 50 square centimetre		
	ND = Not detected (<MDL)	NA = Not applicable	NR = Not requested
	MDL = Method Detection Limit		

TEST REPORT

Job No./Report No TR2524633-RV1

Date: 28 August 2024

Page 13 of 104

Test Item(s):	RESULTS		
	1.16	1.17	1.18
Cadmium (Cd)	ND	ND	ND
Lead (Pb)	ND	ND	ND
Mercury (Hg)	ND	ND	ND
Hexavalent Chromium (Cr(VI)) (ppm) (for non metal)	NA	NA	NA
Hexavalent Chromium (Cr(VI)) ($\mu\text{g}/\text{cm}^2$) (for metal)	ND	ND	ND
Flame Retardants			
Sum of PBBs	NA	NA	NA
Monobromobiphenyl	NA	NA	NA
Dibromobiphenyl	NA	NA	NA
Tribromobiphenyl	NA	NA	NA
Tetrabromobiphenyl	NA	NA	NA
Pentabromobiphenyl	NA	NA	NA
Hexabromobiphenyl	NA	NA	NA
Heptabromobiphenyl	NA	NA	NA
Octabromobiphenyl	NA	NA	NA
Nonabromobiphenyl	NA	NA	NA
Decabromobiphenyl	NA	NA	NA
Sum of PBDEs	NA	NA	NA
Monobromodiphenyl ether	NA	NA	NA
Dibromodiphenyl ether	NA	NA	NA
Tribromodiphenyl ether	NA	NA	NA
Tetrabromodiphenyl ether	NA	NA	NA
Pentabromodiphenyl ether	NA	NA	NA
Hexabromodiphenyl ether	NA	NA	NA
Heptabromodiphenyl ether	NA	NA	NA
Octabromodiphenyl ether	NA	NA	NA
Nonabromodiphenyl ether	NA	NA	NA
Decabromodiphenyl ether	NA	NA	NA
Phthalates	NA	NA	NA
Dibutyl phthalate (DBP)	NA	NA	NA
Butyl benzyl phthalate (BBP)	NA	NA	NA
Bis (2-ethylhexyl) phthalate (DEHP)	NA	NA	NA
Diisobutyl Phthalates (DIBP)	NA	NA	NA

Remarks:	ppm = Parts per million based on dry weight of sample (1 mg/kg = 0.0001%)		
	$\mu\text{g}/\text{cm}^2$ = Microgram per square centimeter		
	mg/kg with 50 cm ² = Milligram per kilogram with 50 square centimetre		
	ND = Not detected (<MDL)	NA = Not applicable	NR = Not requested
	MDL = Method Detection Limit		

TEST REPORT

Job No./Report No TR2524633-RV1

Date: 28 August 2024

Page 14 of 104

Test Item(s):	RESULTS		
	1.19	1.20	1.21
Cadmium (Cd)	ND	ND	ND
Lead (Pb)	ND	ND	ND
Mercury (Hg)	ND	ND	ND
Hexavalent Chromium (Cr(VI)) (ppm) (for non metal)	NA	NA	NA
Hexavalent Chromium (Cr(VI)) (µg/cm ²) (for metal)	ND	ND	ND
Flame Retardants			
Sum of PBBs	NA	NA	NA
Monobromobiphenyl	NA	NA	NA
Dibromobiphenyl	NA	NA	NA
Tribromobiphenyl	NA	NA	NA
Tetrabromobiphenyl	NA	NA	NA
Pentabromobiphenyl	NA	NA	NA
Hexabromobiphenyl	NA	NA	NA
Heptabromobiphenyl	NA	NA	NA
Octabromobiphenyl	NA	NA	NA
Nonabromobiphenyl	NA	NA	NA
Decabromobiphenyl	NA	NA	NA
Sum of PBDEs	NA	NA	NA
Monobromodiphenyl ether	NA	NA	NA
Dibromodiphenyl ether	NA	NA	NA
Tribromodiphenyl ether	NA	NA	NA
Tetrabromodiphenyl ether	NA	NA	NA
Pentabromodiphenyl ether	NA	NA	NA
Hexabromodiphenyl ether	NA	NA	NA
Heptabromodiphenyl ether	NA	NA	NA
Octabromodiphenyl ether	NA	NA	NA
Nonabromodiphenyl ether	NA	NA	NA
Decabromodiphenyl ether	NA	NA	NA
Phthalates	NA	NA	NA
Dibutyl phthalate (DBP)	NA	NA	NA
Butyl benzyl phthalate (BBP)	NA	NA	NA
Bis (2-ethylhexyl) phthalate (DEHP)	NA	NA	NA
Diisobutyl Phthalates (DIBP)	NA	NA	NA

Remarks:	ppm = Parts per million based on dry weight of sample (1 mg/kg = 0.0001%)		
	µg/cm ² = Microgram per square centimeter		
	mg/kg with 50 cm ² = Milligram per kilogram with 50 square centimetre		
	ND = Not detected (<MDL)	NA = Not applicable	NR = Not requested
	MDL = Method Detection Limit		

TEST REPORT

Job No./Report No TR2524633-RV1

Date: 28 August 2024

Page 15 of 104

Test Item(s):	RESULTS		
	1.22	1.23	1.24
Cadmium (Cd)	ND	ND	ND
Lead (Pb)	ND	ND	ND
Mercury (Hg)	ND	ND	ND
Hexavalent Chromium (Cr(VI)) (ppm) (for non metal)	NA	NA	NA
Hexavalent Chromium (Cr(VI)) ($\mu\text{g}/\text{cm}^2$) (for metal)	ND	ND	ND
Flame Retardants			
Sum of PBBs	NA	NA	NA
Monobromobiphenyl	NA	NA	NA
Dibromobiphenyl	NA	NA	NA
Tribromobiphenyl	NA	NA	NA
Tetrabromobiphenyl	NA	NA	NA
Pentabromobiphenyl	NA	NA	NA
Hexabromobiphenyl	NA	NA	NA
Heptabromobiphenyl	NA	NA	NA
Octabromobiphenyl	NA	NA	NA
Nonabromobiphenyl	NA	NA	NA
Decabromobiphenyl	NA	NA	NA
Sum of PBDEs	NA	NA	NA
Monobromodiphenyl ether	NA	NA	NA
Dibromodiphenyl ether	NA	NA	NA
Tribromodiphenyl ether	NA	NA	NA
Tetrabromodiphenyl ether	NA	NA	NA
Pentabromodiphenyl ether	NA	NA	NA
Hexabromodiphenyl ether	NA	NA	NA
Heptabromodiphenyl ether	NA	NA	NA
Octabromodiphenyl ether	NA	NA	NA
Nonabromodiphenyl ether	NA	NA	NA
Decabromodiphenyl ether	NA	NA	NA
Phthalates	NA	NA	NA
Dibutyl phthalate (DBP)	NA	NA	NA
Butyl benzyl phthalate (BBP)	NA	NA	NA
Bis (2-ethylhexyl) phthalate (DEHP)	NA	NA	NA
Diisobutyl Phthalates (DIBP)	NA	NA	NA

Remarks:	ppm = Parts per million based on dry weight of sample (1 mg/kg = 0.0001%)		
	$\mu\text{g}/\text{cm}^2$ = Microgram per square centimeter		
	mg/kg with 50 cm ² = Milligram per kilogram with 50 square centimetre		
	ND = Not detected (<MDL)	NA = Not applicable	NR = Not requested
	MDL = Method Detection Limit		

TEST REPORT

Job No./Report No TR2524633-RV1

Date: 28 August 2024

Page 16 of 104

Test Item(s):	RESULTS	
	1.25	1.26
Cadmium (Cd)	ND	ND
Lead (Pb)	ND	ND
Mercury (Hg)	ND	ND
Hexavalent Chromium (Cr(VI)) (ppm) (for non metal)	NA	NA
Hexavalent Chromium (Cr(VI)) ($\mu\text{g}/\text{cm}^2$) (for metal)	ND	ND
Flame Retardants		
Sum of PBBs	NA	NA
Monobromobiphenyl	NA	NA
Dibromobiphenyl	NA	NA
Tribromobiphenyl	NA	NA
Tetrabromobiphenyl	NA	NA
Pentabromobiphenyl	NA	NA
Hexabromobiphenyl	NA	NA
Heptabromobiphenyl	NA	NA
Octabromobiphenyl	NA	NA
Nonabromobiphenyl	NA	NA
Decabromobiphenyl	NA	NA
Sum of PBDEs	NA	NA
Monobromodiphenyl ether	NA	NA
Dibromodiphenyl ether	NA	NA
Tribromodiphenyl ether	NA	NA
Tetrabromodiphenyl ether	NA	NA
Pentabromodiphenyl ether	NA	NA
Hexabromodiphenyl ether	NA	NA
Heptabromodiphenyl ether	NA	NA
Octabromodiphenyl ether	NA	NA
Nonabromodiphenyl ether	NA	NA
Decabromodiphenyl ether	NA	NA
Phthalates	NA	NA
Dibutyl phthalate (DBP)	NA	NA
Butyl benzyl phthalate (BBP)	NA	NA
Bis (2-ethylhexyl) phthalate (DEHP)	NA	NA
Diisobutyl Phthalates (DIBP)	NA	NA

Remarks:	ppm = Parts per million based on dry weight of sample (1 mg/kg = 0.0001%)		
	$\mu\text{g}/\text{cm}^2$ = Microgram per square centimeter		
	mg/kg with 50 cm^2 = Milligram per kilogram with 50 square centimetre		
	ND = Not detected (<MDL)	NA = Not applicable	NR = Not requested
	MDL = Method Detection Limit		

TEST REPORT

Job No./Report No TR2524633-RV1

Date: 28 August 2024

Page 17 of 104

Test Item(s):	RESULTS		
	2.1	2.2	2.3
Cadmium (Cd)	ND	ND	ND
Lead (Pb)	ND	ND	ND
Mercury (Hg)	ND	ND	ND
Hexavalent Chromium (Cr(VI)) (ppm) (for non metal)	NA	ND	ND
Hexavalent Chromium (Cr(VI)) (µg/cm ²) (for metal)	ND	NA	NA
Flame Retardants			
Sum of PBBs	NA	ND	ND
Monobromobiphenyl	NA	ND	ND
Dibromobiphenyl	NA	ND	ND
Tribromobiphenyl	NA	ND	ND
Tetrabromobiphenyl	NA	ND	ND
Pentabromobiphenyl	NA	ND	ND
Hexabromobiphenyl	NA	ND	ND
Heptabromobiphenyl	NA	ND	ND
Octabromobiphenyl	NA	ND	ND
Nonabromobiphenyl	NA	ND	ND
Decabromobiphenyl	NA	ND	ND
Sum of PBDEs	NA	ND	ND
Monobromodiphenyl ether	NA	ND	ND
Dibromodiphenyl ether	NA	ND	ND
Tribromodiphenyl ether	NA	ND	ND
Tetrabromodiphenyl ether	NA	ND	ND
Pentabromodiphenyl ether	NA	ND	ND
Hexabromodiphenyl ether	NA	ND	ND
Heptabromodiphenyl ether	NA	ND	ND
Octabromodiphenyl ether	NA	ND	ND
Nonabromodiphenyl ether	NA	ND	ND
Decabromodiphenyl ether	NA	ND	ND
Phthalates	NA	ND	ND
Dibutyl phthalate (DBP)	NA	ND	ND
Butyl benzyl phthalate (BBP)	NA	ND	ND
Bis (2-ethylhexyl) phthalate (DEHP)	NA	ND	ND
Diisobutyl Phthalates (DIBP)	NA	ND	ND

Remarks:	ppm = Parts per million based on dry weight of sample (1 mg/kg = 0.0001%)		
	µg/cm ² = Microgram per square centimeter		
	mg/kg with 50 cm ² = Milligram per kilogram with 50 square centimetre		
	ND = Not detected (<MDL)	NA = Not applicable	NR = Not requested
	MDL = Method Detection Limit		

TEST REPORT

Job No./Report No TR2524633-RV1

Date: 28 August 2024

Page 18 of 104

Test Item(s):	RESULTS		
	2.4	2.5	2.6
Cadmium (Cd)	ND	ND	ND
Lead (Pb)	ND	ND	ND
Mercury (Hg)	ND	ND	ND
Hexavalent Chromium (Cr(VI)) (ppm) (for non metal)	ND	ND	NA
Hexavalent Chromium (Cr(VI)) ($\mu\text{g}/\text{cm}^2$) (for metal)	NA	NA	ND
Flame Retardants			
Sum of PBBs	ND	ND	NA
Monobromobiphenyl	ND	ND	NA
Dibromobiphenyl	ND	ND	NA
Tribromobiphenyl	ND	ND	NA
Tetrabromobiphenyl	ND	ND	NA
Pentabromobiphenyl	ND	ND	NA
Hexabromobiphenyl	ND	ND	NA
Heptabromobiphenyl	ND	ND	NA
Octabromobiphenyl	ND	ND	NA
Nonabromobiphenyl	ND	ND	NA
Decabromobiphenyl	ND	ND	NA
Sum of PBDEs	ND	ND	NA
Monobromodiphenyl ether	ND	ND	NA
Dibromodiphenyl ether	ND	ND	NA
Tribromodiphenyl ether	ND	ND	NA
Tetrabromodiphenyl ether	ND	ND	NA
Pentabromodiphenyl ether	ND	ND	NA
Hexabromodiphenyl ether	ND	ND	NA
Heptabromodiphenyl ether	ND	ND	NA
Octabromodiphenyl ether	ND	ND	NA
Nonabromodiphenyl ether	ND	ND	NA
Decabromodiphenyl ether	ND	ND	NA
Phthalates	ND	ND	NA
Dibutyl phthalate (DBP)	ND	ND	NA
Butyl benzyl phthalate (BBP)	ND	ND	NA
Bis (2-ethylhexyl) phthalate (DEHP)	ND	ND	NA
Diisobutyl Phthalates (DIBP)	ND	ND	NA

Remarks:	ppm = Parts per million based on dry weight of sample (1 mg/kg = 0.0001%)		
	$\mu\text{g}/\text{cm}^2$ = Microgram per square centimeter		
	mg/kg with 50 cm ² = Milligram per kilogram with 50 square centimetre		
	ND = Not detected (<MDL)	NA = Not applicable	NR = Not requested
	MDL = Method Detection Limit		

TEST REPORT

Job No./Report No TR2524633-RV1

Date: 28 August 2024

Page 19 of 104

Test Item(s):	RESULTS
	<u>2.7</u>
Cadmium (Cd)	ND
Lead (Pb)	ND
Mercury (Hg)	ND
Hexavalent Chromium (Cr(VI)) (ppm) (for non metal)	NA
Hexavalent Chromium (Cr(VI)) ($\mu\text{g}/\text{cm}^2$) (for metal)	ND
Flame Retardants	
Sum of PBBs	NA
Monobromobiphenyl	NA
Dibromobiphenyl	NA
Tribromobiphenyl	NA
Tetrabromobiphenyl	NA
Pentabromobiphenyl	NA
Hexabromobiphenyl	NA
Heptabromobiphenyl	NA
Octabromobiphenyl	NA
Nonabromobiphenyl	NA
Decabromobiphenyl	NA
Sum of PBDEs	NA
Monobromodiphenyl ether	NA
Dibromodiphenyl ether	NA
Tribromodiphenyl ether	NA
Tetrabromodiphenyl ether	NA
Pentabromodiphenyl ether	NA
Hexabromodiphenyl ether	NA
Heptabromodiphenyl ether	NA
Octabromodiphenyl ether	NA
Nonabromodiphenyl ether	NA
Decabromodiphenyl ether	NA
Phthalates	NA
Dibutyl phthalate (DBP)	NA
Butyl benzyl phthalate (BBP)	NA
Bis (2-ethylhexyl) phthalate (DEHP)	NA
Diisobutyl Phthalates (DIBP)	NA

Remarks:	ppm = Parts per million based on dry weight of sample (1 mg/kg = 0.0001%)		
	$\mu\text{g}/\text{cm}^2$ = Microgram per square centimeter		
	mg/kg with 50 cm ² = Milligram per kilogram with 50 square centimetre		
	ND = Not detected (<MDL)	NA = Not applicable	NR = Not requested
	MDL = Method Detection Limit		

TEST REPORT

Job No./Report No TR2524633-RV1

Date: 28 August 2024

Page 20 of 104

Test Item(s):	RESULTS		
	3.1	3.2	3.3
Cadmium (Cd)	ND	ND	ND
Lead (Pb)	ND	ND	ND
Mercury (Hg)	ND	ND	ND
Hexavalent Chromium (Cr(VI)) (ppm) (for non metal)	NA	NA	NA
Hexavalent Chromium (Cr(VI)) ($\mu\text{g}/\text{cm}^2$) (for metal)	ND	ND	ND
Flame Retardants			
Sum of PBBs	NA	NA	NA
Monobromobiphenyl	NA	NA	NA
Dibromobiphenyl	NA	NA	NA
Tribromobiphenyl	NA	NA	NA
Tetrabromobiphenyl	NA	NA	NA
Pentabromobiphenyl	NA	NA	NA
Hexabromobiphenyl	NA	NA	NA
Heptabromobiphenyl	NA	NA	NA
Octabromobiphenyl	NA	NA	NA
Nonabromobiphenyl	NA	NA	NA
Decabromobiphenyl	NA	NA	NA
Sum of PBDEs	NA	NA	NA
Monobromodiphenyl ether	NA	NA	NA
Dibromodiphenyl ether	NA	NA	NA
Tribromodiphenyl ether	NA	NA	NA
Tetrabromodiphenyl ether	NA	NA	NA
Pentabromodiphenyl ether	NA	NA	NA
Hexabromodiphenyl ether	NA	NA	NA
Heptabromodiphenyl ether	NA	NA	NA
Octabromodiphenyl ether	NA	NA	NA
Nonabromodiphenyl ether	NA	NA	NA
Decabromodiphenyl ether	NA	NA	NA
Phthalates	NA	NA	NA
Dibutyl phthalate (DBP)	NA	NA	NA
Butyl benzyl phthalate (BBP)	NA	NA	NA
Bis (2-ethylhexyl) phthalate (DEHP)	NA	NA	NA
Diisobutyl Phthalates (DIBP)	NA	NA	NA

Remarks:	ppm = Parts per million based on dry weight of sample (1 mg/kg = 0.0001%)		
	$\mu\text{g}/\text{cm}^2$ = Microgram per square centimeter		
	mg/kg with 50 cm ² = Milligram per kilogram with 50 square centimetre		
	ND = Not detected (<MDL)	NA = Not applicable	NR = Not requested
	MDL = Method Detection Limit		

TEST REPORT

Job No./Report No TR2524633-RV1

Date: 28 August 2024

Page 21 of 104

Test Item(s):	RESULTS		
	3.4	3.5	3.6
Cadmium (Cd)	ND	ND	ND
Lead (Pb)	ND	ND	ND
Mercury (Hg)	ND	ND	ND
Hexavalent Chromium (Cr(VI)) (ppm) (for non metal)	NA	NA	ND
Hexavalent Chromium (Cr(VI)) ($\mu\text{g}/\text{cm}^2$) (for metal)	ND	ND	NA
Flame Retardants			
Sum of PBBs	NA	NA	ND
Monobromobiphenyl	NA	NA	ND
Dibromobiphenyl	NA	NA	ND
Tribromobiphenyl	NA	NA	ND
Tetrabromobiphenyl	NA	NA	ND
Pentabromobiphenyl	NA	NA	ND
Hexabromobiphenyl	NA	NA	ND
Heptabromobiphenyl	NA	NA	ND
Octabromobiphenyl	NA	NA	ND
Nonabromobiphenyl	NA	NA	ND
Decabromobiphenyl	NA	NA	ND
Sum of PBDEs	NA	NA	ND
Monobromodiphenyl ether	NA	NA	ND
Dibromodiphenyl ether	NA	NA	ND
Tribromodiphenyl ether	NA	NA	ND
Tetrabromodiphenyl ether	NA	NA	ND
Pentabromodiphenyl ether	NA	NA	ND
Hexabromodiphenyl ether	NA	NA	ND
Heptabromodiphenyl ether	NA	NA	ND
Octabromodiphenyl ether	NA	NA	ND
Nonabromodiphenyl ether	NA	NA	ND
Decabromodiphenyl ether	NA	NA	ND
Phthalates	NA	NA	ND
Dibutyl phthalate (DBP)	NA	NA	ND
Butyl benzyl phthalate (BBP)	NA	NA	ND
Bis (2-ethylhexyl) phthalate (DEHP)	NA	NA	ND
Diisobutyl Phthalates (DIBP)	NA	NA	ND

Remarks:	ppm = Parts per million based on dry weight of sample (1 mg/kg = 0.0001%)		
	$\mu\text{g}/\text{cm}^2$ = Microgram per square centimeter		
	mg/kg with 50 cm ² = Milligram per kilogram with 50 square centimetre		
	ND = Not detected (<MDL)	NA = Not applicable	NR = Not requested
	MDL = Method Detection Limit		

TEST REPORT

Job No./Report No TR2524633-RV1

Date: 28 August 2024

Page 22 of 104

Test Item(s):	RESULTS
	<u>3.7</u>
Cadmium (Cd)	ND
Lead (Pb)	ND
Mercury (Hg)	ND
Hexavalent Chromium (Cr(VI)) (ppm) (for non metal)	ND
Hexavalent Chromium (Cr(VI)) ($\mu\text{g}/\text{cm}^2$) (for metal)	NA
Flame Retardants	
Sum of PBBs	ND
Monobromobiphenyl	ND
Dibromobiphenyl	ND
Tribromobiphenyl	ND
Tetrabromobiphenyl	ND
Pentabromobiphenyl	ND
Hexabromobiphenyl	ND
Heptabromobiphenyl	ND
Octabromobiphenyl	ND
Nonabromobiphenyl	ND
Decabromobiphenyl	ND
Sum of PBDEs	ND
Monobromodiphenyl ether	ND
Dibromodiphenyl ether	ND
Tribromodiphenyl ether	ND
Tetrabromodiphenyl ether	ND
Pentabromodiphenyl ether	ND
Hexabromodiphenyl ether	ND
Heptabromodiphenyl ether	ND
Octabromodiphenyl ether	ND
Nonabromodiphenyl ether	ND
Decabromodiphenyl ether	ND
Phthalates	ND
Dibutyl phthalate (DBP)	ND
Butyl benzyl phthalate (BBP)	ND
Bis (2-ethylhexyl) phthalate (DEHP)	ND
Diisobutyl Phthalates (DIBP)	ND

Remarks:	ppm = Parts per million based on dry weight of sample (1 mg/kg = 0.0001%)		
	$\mu\text{g}/\text{cm}^2$ = Microgram per square centimeter		
	mg/kg with 50 cm ² = Milligram per kilogram with 50 square centimetre		
	ND = Not detected (<MDL)	NA = Not applicable	NR = Not requested
	MDL = Method Detection Limit		

TEST REPORT

Job No./Report No TR2524633-RV1

Date: 28 August 2024

Page 23 of 104

Test Item(s):	RESULTS		
	4.1	4.2	4.3
Cadmium (Cd)	ND	ND	ND
Lead (Pb)	ND	ND	ND
Mercury (Hg)	ND	ND	ND
Hexavalent Chromium (Cr(VI)) (ppm) (for non metal)	ND	ND	NA
Hexavalent Chromium (Cr(VI)) (µg/cm ²) (for metal)	NA	NA	ND
Flame Retardants			
Sum of PBBs	ND	ND	NA
Monobromobiphenyl	ND	ND	NA
Dibromobiphenyl	ND	ND	NA
Tribromobiphenyl	ND	ND	NA
Tetrabromobiphenyl	ND	ND	NA
Pentabromobiphenyl	ND	ND	NA
Hexabromobiphenyl	ND	ND	NA
Heptabromobiphenyl	ND	ND	NA
Octabromobiphenyl	ND	ND	NA
Nonabromobiphenyl	ND	ND	NA
Decabromobiphenyl	ND	ND	NA
Sum of PBDEs	ND	ND	NA
Monobromodiphenyl ether	ND	ND	NA
Dibromodiphenyl ether	ND	ND	NA
Tribromodiphenyl ether	ND	ND	NA
Tetrabromodiphenyl ether	ND	ND	NA
Pentabromodiphenyl ether	ND	ND	NA
Hexabromodiphenyl ether	ND	ND	NA
Heptabromodiphenyl ether	ND	ND	NA
Octabromodiphenyl ether	ND	ND	NA
Nonabromodiphenyl ether	ND	ND	NA
Decabromodiphenyl ether	ND	ND	NA
Phthalates	ND	ND	NA
Dibutyl phthalate (DBP)	ND	ND	NA
Butyl benzyl phthalate (BBP)	ND	ND	NA
Bis (2-ethylhexyl) phthalate (DEHP)	ND	ND	NA
Diisobutyl Phthalates (DIBP)	ND	ND	NA

Remarks:	ppm = Parts per million based on dry weight of sample (1 mg/kg = 0.0001%)		
	µg/cm ² = Microgram per square centimeter		
	mg/kg with 50 cm ² = Milligram per kilogram with 50 square centimetre		
	ND = Not detected (<MDL)	NA = Not applicable	NR = Not requested
	MDL = Method Detection Limit		

TEST REPORT

Job No./Report No TR2524633-RV1

Date: 28 August 2024

Page 24 of 104

Test Item(s):	RESULTS		
	4.4	4.5	4.6
Cadmium (Cd)	ND	ND	ND
Lead (Pb)	ND	ND	ND
Mercury (Hg)	ND	ND	ND
Hexavalent Chromium (Cr(VI)) (ppm) (for non metal)	ND	NA	NA
Hexavalent Chromium (Cr(VI)) (µg/cm ²) (for metal)	NA	ND	ND
Flame Retardants			
Sum of PBBs	ND	NA	NA
Monobromobiphenyl	ND	NA	NA
Dibromobiphenyl	ND	NA	NA
Tribromobiphenyl	ND	NA	NA
Tetrabromobiphenyl	ND	NA	NA
Pentabromobiphenyl	ND	NA	NA
Hexabromobiphenyl	ND	NA	NA
Heptabromobiphenyl	ND	NA	NA
Octabromobiphenyl	ND	NA	NA
Nonabromobiphenyl	ND	NA	NA
Decabromobiphenyl	ND	NA	NA
Sum of PBDEs	ND	NA	NA
Monobromodiphenyl ether	ND	NA	NA
Dibromodiphenyl ether	ND	NA	NA
Tribromodiphenyl ether	ND	NA	NA
Tetrabromodiphenyl ether	ND	NA	NA
Pentabromodiphenyl ether	ND	NA	NA
Hexabromodiphenyl ether	ND	NA	NA
Heptabromodiphenyl ether	ND	NA	NA
Octabromodiphenyl ether	ND	NA	NA
Nonabromodiphenyl ether	ND	NA	NA
Decabromodiphenyl ether	ND	NA	NA
Phthalates	ND	NA	NA
Dibutyl phthalate (DBP)	ND	NA	NA
Butyl benzyl phthalate (BBP)	ND	NA	NA
Bis (2-ethylhexyl) phthalate (DEHP)	ND	NA	NA
Diisobutyl Phthalates (DIBP)	ND	NA	NA

Remarks:	ppm = Parts per million based on dry weight of sample (1 mg/kg = 0.0001%)		
	µg/cm ² = Microgram per square centimeter		
	mg/kg with 50 cm ² = Milligram per kilogram with 50 square centimetre		
	ND = Not detected (<MDL)	NA = Not applicable	NR = Not requested
	MDL = Method Detection Limit		

TEST REPORT

Job No./Report No TR2524633-RV1

Date: 28 August 2024

Page 25 of 104

Test Item(s):	RESULTS		
	4.7	4.8	4.9
Cadmium (Cd)	ND	ND	ND
Lead (Pb)	ND	ND	ND
Mercury (Hg)	ND	ND	ND
Hexavalent Chromium (Cr(VI)) (ppm) (for non metal)	NA	NA	ND
Hexavalent Chromium (Cr(VI)) ($\mu\text{g}/\text{cm}^2$) (for metal)	ND	ND	NA
Flame Retardants			
Sum of PBBs	NA	NA	ND
Monobromobiphenyl	NA	NA	ND
Dibromobiphenyl	NA	NA	ND
Tribromobiphenyl	NA	NA	ND
Tetrabromobiphenyl	NA	NA	ND
Pentabromobiphenyl	NA	NA	ND
Hexabromobiphenyl	NA	NA	ND
Heptabromobiphenyl	NA	NA	ND
Octabromobiphenyl	NA	NA	ND
Nonabromobiphenyl	NA	NA	ND
Decabromobiphenyl	NA	NA	ND
Sum of PBDEs	NA	NA	ND
Monobromodiphenyl ether	NA	NA	ND
Dibromodiphenyl ether	NA	NA	ND
Tribromodiphenyl ether	NA	NA	ND
Tetrabromodiphenyl ether	NA	NA	ND
Pentabromodiphenyl ether	NA	NA	ND
Hexabromodiphenyl ether	NA	NA	ND
Heptabromodiphenyl ether	NA	NA	ND
Octabromodiphenyl ether	NA	NA	ND
Nonabromodiphenyl ether	NA	NA	ND
Decabromodiphenyl ether	NA	NA	ND
Phthalates	NA	NA	ND
Dibutyl phthalate (DBP)	NA	NA	ND
Butyl benzyl phthalate (BBP)	NA	NA	ND
Bis (2-ethylhexyl) phthalate (DEHP)	NA	NA	ND
Diisobutyl Phthalates (DIBP)	NA	NA	ND

Remarks:	ppm = Parts per million based on dry weight of sample (1 mg/kg = 0.0001%)		
	$\mu\text{g}/\text{cm}^2$ = Microgram per square centimeter		
	mg/kg with 50 cm ² = Milligram per kilogram with 50 square centimetre		
	ND = Not detected (<MDL)	NA = Not applicable	NR = Not requested
	MDL = Method Detection Limit		

TEST REPORT

Job No./Report No TR2524633-RV1

Date: 28 August 2024

Page 26 of 104

Test Item(s):	RESULTS		
	4.10	4.11	4.12
Cadmium (Cd)	ND	ND	ND
Lead (Pb)	ND	ND	ND
Mercury (Hg)	ND	ND	ND
Hexavalent Chromium (Cr(VI)) (ppm) (for non metal)	ND	ND	NA
Hexavalent Chromium (Cr(VI)) (µg/cm ²) (for metal)	NA	NA	ND
Flame Retardants			
Sum of PBBs	ND	ND	NA
Monobromobiphenyl	ND	ND	NA
Dibromobiphenyl	ND	ND	NA
Tribromobiphenyl	ND	ND	NA
Tetrabromobiphenyl	ND	ND	NA
Pentabromobiphenyl	ND	ND	NA
Hexabromobiphenyl	ND	ND	NA
Heptabromobiphenyl	ND	ND	NA
Octabromobiphenyl	ND	ND	NA
Nonabromobiphenyl	ND	ND	NA
Decabromobiphenyl	ND	ND	NA
Sum of PBDEs	ND	ND	NA
Monobromodiphenyl ether	ND	ND	NA
Dibromodiphenyl ether	ND	ND	NA
Tribromodiphenyl ether	ND	ND	NA
Tetrabromodiphenyl ether	ND	ND	NA
Pentabromodiphenyl ether	ND	ND	NA
Hexabromodiphenyl ether	ND	ND	NA
Heptabromodiphenyl ether	ND	ND	NA
Octabromodiphenyl ether	ND	ND	NA
Nonabromodiphenyl ether	ND	ND	NA
Decabromodiphenyl ether	ND	ND	NA
Phthalates	ND	ND	NA
Dibutyl phthalate (DBP)	ND	ND	NA
Butyl benzyl phthalate (BBP)	ND	ND	NA
Bis (2-ethylhexyl) phthalate (DEHP)	ND	ND	NA
Diisobutyl Phthalates (DIBP)	ND	ND	NA

Remarks:	ppm = Parts per million based on dry weight of sample (1 mg/kg = 0.0001%)		
	µg/cm ² = Microgram per square centimeter		
	mg/kg with 50 cm ² = Milligram per kilogram with 50 square centimetre		
	ND = Not detected (<MDL)	NA = Not applicable	NR = Not requested
	MDL = Method Detection Limit		

TEST REPORT

Job No./Report No TR2524633-RV1

Date: 28 August 2024

Page 27 of 104

<u>Test Item(s):</u>	<u>RESULTS</u>		
	<u>4.13</u>	<u>4.14</u>	<u>4.15</u>
Cadmium (Cd)	ND	ND	ND
Lead (Pb)	ND	ND	ND
Mercury (Hg)	ND	ND	ND
Hexavalent Chromium (Cr(VI)) (ppm) (for non metal)	NA	NA	NA
Hexavalent Chromium (Cr(VI)) ($\mu\text{g}/\text{cm}^2$) (for metal)	ND	ND	ND
Flame Retardants			
Sum of PBBs	NA	NA	NA
Monobromobiphenyl	NA	NA	NA
Dibromobiphenyl	NA	NA	NA
Tribromobiphenyl	NA	NA	NA
Tetrabromobiphenyl	NA	NA	NA
Pentabromobiphenyl	NA	NA	NA
Hexabromobiphenyl	NA	NA	NA
Heptabromobiphenyl	NA	NA	NA
Octabromobiphenyl	NA	NA	NA
Nonabromobiphenyl	NA	NA	NA
Decabromobiphenyl	NA	NA	NA
Sum of PBDEs	NA	NA	NA
Monobromodiphenyl ether	NA	NA	NA
Dibromodiphenyl ether	NA	NA	NA
Tribromodiphenyl ether	NA	NA	NA
Tetrabromodiphenyl ether	NA	NA	NA
Pentabromodiphenyl ether	NA	NA	NA
Hexabromodiphenyl ether	NA	NA	NA
Heptabromodiphenyl ether	NA	NA	NA
Octabromodiphenyl ether	NA	NA	NA
Nonabromodiphenyl ether	NA	NA	NA
Decabromodiphenyl ether	NA	NA	NA
Phthalates	NA	NA	NA
Dibutyl phthalate (DBP)	NA	NA	NA
Butyl benzyl phthalate (BBP)	NA	NA	NA
Bis (2-ethylhexyl) phthalate (DEHP)	NA	NA	NA
Diisobutyl Phthalates (DIBP)	NA	NA	NA

Remarks:	ppm = Parts per million based on dry weight of sample (1 mg/kg = 0.0001%)		
	$\mu\text{g}/\text{cm}^2$ = Microgram per square centimeter		
	mg/kg with 50 cm ² = Milligram per kilogram with 50 square centimetre		
	ND = Not detected (<MDL)	NA = Not applicable	NR = Not requested
	MDL = Method Detection Limit		

TEST REPORT

Job No./Report No TR2524633-RV1

Date: 28 August 2024

Page 28 of 104

Test Item(s):	RESULTS	
	4.16	4.17
Cadmium (Cd)	ND	ND
Lead (Pb)	ND	ND
Mercury (Hg)	ND	ND
Hexavalent Chromium (Cr(VI)) (ppm) (for non metal)	NA	ND
Hexavalent Chromium (Cr(VI)) ($\mu\text{g}/\text{cm}^2$) (for metal)	ND	NA
Flame Retardants		
Sum of PBBs	NA	ND
Monobromobiphenyl	NA	ND
Dibromobiphenyl	NA	ND
Tribromobiphenyl	NA	ND
Tetrabromobiphenyl	NA	ND
Pentabromobiphenyl	NA	ND
Hexabromobiphenyl	NA	ND
Heptabromobiphenyl	NA	ND
Octabromobiphenyl	NA	ND
Nonabromobiphenyl	NA	ND
Decabromobiphenyl	NA	ND
Sum of PBDEs	NA	ND
Monobromodiphenyl ether	NA	ND
Dibromodiphenyl ether	NA	ND
Tribromodiphenyl ether	NA	ND
Tetrabromodiphenyl ether	NA	ND
Pentabromodiphenyl ether	NA	ND
Hexabromodiphenyl ether	NA	ND
Heptabromodiphenyl ether	NA	ND
Octabromodiphenyl ether	NA	ND
Nonabromodiphenyl ether	NA	ND
Decabromodiphenyl ether	NA	ND
Phthalates	NA	ND
Dibutyl phthalate (DBP)	NA	ND
Butyl benzyl phthalate (BBP)	NA	ND
Bis (2-ethylhexyl) phthalate (DEHP)	NA	ND
Diisobutyl Phthalates (DIBP)	NA	ND

Remarks:	ppm = Parts per million based on dry weight of sample (1 mg/kg = 0.0001%)		
	$\mu\text{g}/\text{cm}^2$ = Microgram per square centimeter		
	mg/kg with 50 cm^2 = Milligram per kilogram with 50 square centimetre		
	ND = Not detected (<MDL)	NA = Not applicable	NR = Not requested
	MDL = Method Detection Limit		

TEST REPORT

Job No./Report No TR2524633-RV1

Date: 28 August 2024

Page 29 of 104

Test Item(s):	RESULTS		
	5.1	5.2	5.3
Cadmium (Cd)	ND	ND	ND
Lead (Pb)	ND	ND	40 ppm
Mercury (Hg)	ND	ND	ND
Hexavalent Chromium (Cr(VI)) (ppm) (for non metal)	ND	ND	NA
Hexavalent Chromium (Cr(VI)) (µg/cm ²) (for metal)	NA	NA	ND
Flame Retardants			
Sum of PBBs	ND	ND	NA
Monobromobiphenyl	ND	ND	NA
Dibromobiphenyl	ND	ND	NA
Tribromobiphenyl	ND	ND	NA
Tetrabromobiphenyl	ND	ND	NA
Pentabromobiphenyl	ND	ND	NA
Hexabromobiphenyl	ND	ND	NA
Heptabromobiphenyl	ND	ND	NA
Octabromobiphenyl	ND	ND	NA
Nonabromobiphenyl	ND	ND	NA
Decabromobiphenyl	ND	ND	NA
Sum of PBDEs	ND	ND	NA
Monobromodiphenyl ether	ND	ND	NA
Dibromodiphenyl ether	ND	ND	NA
Tribromodiphenyl ether	ND	ND	NA
Tetrabromodiphenyl ether	ND	ND	NA
Pentabromodiphenyl ether	ND	ND	NA
Hexabromodiphenyl ether	ND	ND	NA
Heptabromodiphenyl ether	ND	ND	NA
Octabromodiphenyl ether	ND	ND	NA
Nonabromodiphenyl ether	ND	ND	NA
Decabromodiphenyl ether	ND	ND	NA
Phthalates	ND	ND	NA
Dibutyl phthalate (DBP)	ND	ND	NA
Butyl benzyl phthalate (BBP)	ND	ND	NA
Bis (2-ethylhexyl) phthalate (DEHP)	ND	ND	NA
Diisobutyl Phthalates (DIBP)	ND	ND	NA

Remarks:	ppm = Parts per million based on dry weight of sample (1 mg/kg = 0.0001%)		
	µg/cm ² = Microgram per square centimeter		
	mg/kg with 50 cm ² = Milligram per kilogram with 50 square centimetre		
	ND = Not detected (<MDL)	NA = Not applicable	NR = Not requested
	MDL = Method Detection Limit		

TEST REPORT

Job No./Report No TR2524633-RV1

Date: 28 August 2024

Page 30 of 104

Test Item(s):	RESULTS		
	5.4	5.5	5.6
Cadmium (Cd)	ND	ND	ND
Lead (Pb)	ND	ND	ND
Mercury (Hg)	ND	ND	ND
Hexavalent Chromium (Cr(VI)) (ppm) (for non metal)	NA	ND	ND
Hexavalent Chromium (Cr(VI)) ($\mu\text{g}/\text{cm}^2$) (for metal)	ND	NA	NA
Flame Retardants			
Sum of PBBs	NA	ND	ND
Monobromobiphenyl	NA	ND	ND
Dibromobiphenyl	NA	ND	ND
Tribromobiphenyl	NA	ND	ND
Tetrabromobiphenyl	NA	ND	ND
Pentabromobiphenyl	NA	ND	ND
Hexabromobiphenyl	NA	ND	ND
Heptabromobiphenyl	NA	ND	ND
Octabromobiphenyl	NA	ND	ND
Nonabromobiphenyl	NA	ND	ND
Decabromobiphenyl	NA	ND	ND
Sum of PBDEs	NA	ND	ND
Monobromodiphenyl ether	NA	ND	ND
Dibromodiphenyl ether	NA	ND	ND
Tribromodiphenyl ether	NA	ND	ND
Tetrabromodiphenyl ether	NA	ND	ND
Pentabromodiphenyl ether	NA	ND	ND
Hexabromodiphenyl ether	NA	ND	ND
Heptabromodiphenyl ether	NA	ND	ND
Octabromodiphenyl ether	NA	ND	ND
Nonabromodiphenyl ether	NA	ND	ND
Decabromodiphenyl ether	NA	ND	ND
Phthalates	NA	ND	ND
Dibutyl phthalate (DBP)	NA	ND	ND
Butyl benzyl phthalate (BBP)	NA	ND	ND
Bis (2-ethylhexyl) phthalate (DEHP)	NA	ND	ND
Diisobutyl Phthalates (DIBP)	NA	ND	ND

Remarks:	ppm = Parts per million based on dry weight of sample (1 mg/kg = 0.0001%)		
	$\mu\text{g}/\text{cm}^2$ = Microgram per square centimeter		
	mg/kg with 50 cm ² = Milligram per kilogram with 50 square centimetre		
	ND = Not detected (<MDL)	NA = Not applicable	NR = Not requested
	MDL = Method Detection Limit		

TEST REPORT

Job No./Report No TR2524633-RV1

Date: 28 August 2024

Page 31 of 104

Test Item(s):	RESULTS		
	5.7	5.8	5.9
Cadmium (Cd)	ND	ND	ND
Lead (Pb)	ND	ND	ND
Mercury (Hg)	ND	ND	ND
Hexavalent Chromium (Cr(VI)) (ppm) (for non metal)	ND	ND	NA
Hexavalent Chromium (Cr(VI)) ($\mu\text{g}/\text{cm}^2$) (for metal)	NA	NA	ND
Flame Retardants			
Sum of PBBs	ND	ND	NA
Monobromobiphenyl	ND	ND	NA
Dibromobiphenyl	ND	ND	NA
Tribromobiphenyl	ND	ND	NA
Tetrabromobiphenyl	ND	ND	NA
Pentabromobiphenyl	ND	ND	NA
Hexabromobiphenyl	ND	ND	NA
Heptabromobiphenyl	ND	ND	NA
Octabromobiphenyl	ND	ND	NA
Nonabromobiphenyl	ND	ND	NA
Decabromobiphenyl	ND	ND	NA
Sum of PBDEs	ND	ND	NA
Monobromodiphenyl ether	ND	ND	NA
Dibromodiphenyl ether	ND	ND	NA
Tribromodiphenyl ether	ND	ND	NA
Tetrabromodiphenyl ether	ND	ND	NA
Pentabromodiphenyl ether	ND	ND	NA
Hexabromodiphenyl ether	ND	ND	NA
Heptabromodiphenyl ether	ND	ND	NA
Octabromodiphenyl ether	ND	ND	NA
Nonabromodiphenyl ether	ND	ND	NA
Decabromodiphenyl ether	ND	ND	NA
Phthalates	ND	ND	NA
Dibutyl phthalate (DBP)	ND	ND	NA
Butyl benzyl phthalate (BBP)	ND	ND	NA
Bis (2-ethylhexyl) phthalate (DEHP)	ND	ND	NA
Diisobutyl Phthalates (DIBP)	ND	ND	NA

Remarks:	ppm = Parts per million based on dry weight of sample (1 mg/kg = 0.0001%)		
	$\mu\text{g}/\text{cm}^2$ = Microgram per square centimeter		
	mg/kg with 50 cm ² = Milligram per kilogram with 50 square centimetre		
	ND = Not detected (<MDL)	NA = Not applicable	NR = Not requested
	MDL = Method Detection Limit		

TEST REPORT

Job No./Report No TR2524633-RV1

Date: 28 August 2024

Page 32 of 104

Test Item(s):	RESULTS		
	6.1	6.2	6.3
Cadmium (Cd)	ND	ND	ND
Lead (Pb)	ND	ND	ND
Mercury (Hg)	ND	ND	ND
Hexavalent Chromium (Cr(VI)) (ppm) (for non metal)	ND	ND	ND
Hexavalent Chromium (Cr(VI)) ($\mu\text{g}/\text{cm}^2$) (for metal)	NA	NA	NA
Flame Retardants			
Sum of PBBs	ND	ND	ND
Monobromobiphenyl	ND	ND	ND
Dibromobiphenyl	ND	ND	ND
Tribromobiphenyl	ND	ND	ND
Tetrabromobiphenyl	ND	ND	ND
Pentabromobiphenyl	ND	ND	ND
Hexabromobiphenyl	ND	ND	ND
Heptabromobiphenyl	ND	ND	ND
Octabromobiphenyl	ND	ND	ND
Nonabromobiphenyl	ND	ND	ND
Decabromobiphenyl	ND	ND	ND
Sum of PBDEs	ND	ND	ND
Monobromodiphenyl ether	ND	ND	ND
Dibromodiphenyl ether	ND	ND	ND
Tribromodiphenyl ether	ND	ND	ND
Tetrabromodiphenyl ether	ND	ND	ND
Pentabromodiphenyl ether	ND	ND	ND
Hexabromodiphenyl ether	ND	ND	ND
Heptabromodiphenyl ether	ND	ND	ND
Octabromodiphenyl ether	ND	ND	ND
Nonabromodiphenyl ether	ND	ND	ND
Decabromodiphenyl ether	ND	ND	ND
Phthalates	ND	ND	ND
Dibutyl phthalate (DBP)	ND	ND	ND
Butyl benzyl phthalate (BBP)	ND	ND	ND
Bis (2-ethylhexyl) phthalate (DEHP)	ND	ND	ND
Diisobutyl Phthalates (DIBP)	ND	ND	ND

Remarks:	ppm = Parts per million based on dry weight of sample (1 mg/kg = 0.0001%)		
	$\mu\text{g}/\text{cm}^2$ = Microgram per square centimeter		
	mg/kg with 50 cm ² = Milligram per kilogram with 50 square centimetre		
	ND = Not detected (<MDL)	NA = Not applicable	NR = Not requested
	MDL = Method Detection Limit		

TEST REPORT

Job No./Report No TR2524633-RV1

Date: 28 August 2024

Page 33 of 104

Test Item(s):	RESULTS		
	6.4	6.5	6.6
Cadmium (Cd)	ND	ND	ND
Lead (Pb)	ND	ND	ND
Mercury (Hg)	ND	ND	ND
Hexavalent Chromium (Cr(VI)) (ppm) (for non metal)	ND	ND	ND
Hexavalent Chromium (Cr(VI)) (µg/cm ²) (for metal)	NA	NA	NA
Flame Retardants			
Sum of PBBs	ND	ND	ND
Monobromobiphenyl	ND	ND	ND
Dibromobiphenyl	ND	ND	ND
Tribromobiphenyl	ND	ND	ND
Tetrabromobiphenyl	ND	ND	ND
Pentabromobiphenyl	ND	ND	ND
Hexabromobiphenyl	ND	ND	ND
Heptabromobiphenyl	ND	ND	ND
Octabromobiphenyl	ND	ND	ND
Nonabromobiphenyl	ND	ND	ND
Decabromobiphenyl	ND	ND	ND
Sum of PBDEs	ND	ND	ND
Monobromodiphenyl ether	ND	ND	ND
Dibromodiphenyl ether	ND	ND	ND
Tribromodiphenyl ether	ND	ND	ND
Tetrabromodiphenyl ether	ND	ND	ND
Pentabromodiphenyl ether	ND	ND	ND
Hexabromodiphenyl ether	ND	ND	ND
Heptabromodiphenyl ether	ND	ND	ND
Octabromodiphenyl ether	ND	ND	ND
Nonabromodiphenyl ether	ND	ND	ND
Decabromodiphenyl ether	ND	ND	ND
Phthalates	ND	ND	ND
Dibutyl phthalate (DBP)	ND	ND	ND
Butyl benzyl phthalate (BBP)	ND	ND	ND
Bis (2-ethylhexyl) phthalate (DEHP)	ND	ND	ND
Diisobutyl Phthalates (DIBP)	ND	ND	ND

Remarks:	ppm = Parts per million based on dry weight of sample (1 mg/kg = 0.0001%)		
	µg/cm ² = Microgram per square centimeter		
	mg/kg with 50 cm ² = Milligram per kilogram with 50 square centimetre		
	ND = Not detected (<MDL)	NA = Not applicable	NR = Not requested
	MDL = Method Detection Limit		

TEST REPORT

Job No./Report No TR2524633-RV1

Date: 28 August 2024

Page 34 of 104

Test Item(s):	RESULTS		
	6.7	6.8	6.9
Cadmium (Cd)	ND	ND	ND
Lead (Pb)	ND	ND	ND
Mercury (Hg)	ND	ND	ND
Hexavalent Chromium (Cr(VI)) (ppm) (for non metal)	ND	ND	ND
Hexavalent Chromium (Cr(VI)) (µg/cm ²) (for metal)	NA	NA	NA
Flame Retardants			
Sum of PBBs	ND	ND	ND
Monobromobiphenyl	ND	ND	ND
Dibromobiphenyl	ND	ND	ND
Tribromobiphenyl	ND	ND	ND
Tetrabromobiphenyl	ND	ND	ND
Pentabromobiphenyl	ND	ND	ND
Hexabromobiphenyl	ND	ND	ND
Heptabromobiphenyl	ND	ND	ND
Octabromobiphenyl	ND	ND	ND
Nonabromobiphenyl	ND	ND	ND
Decabromobiphenyl	ND	ND	ND
Sum of PBDEs	ND	ND	ND
Monobromodiphenyl ether	ND	ND	ND
Dibromodiphenyl ether	ND	ND	ND
Tribromodiphenyl ether	ND	ND	ND
Tetrabromodiphenyl ether	ND	ND	ND
Pentabromodiphenyl ether	ND	ND	ND
Hexabromodiphenyl ether	ND	ND	ND
Heptabromodiphenyl ether	ND	ND	ND
Octabromodiphenyl ether	ND	ND	ND
Nonabromodiphenyl ether	ND	ND	ND
Decabromodiphenyl ether	ND	ND	ND
Phthalates	NA	NA	NA
Dibutyl phthalate (DBP)	NA	NA	NA
Butyl benzyl phthalate (BBP)	NA	NA	NA
Bis (2-ethylhexyl) phthalate (DEHP)	NA	NA	NA
Diisobutyl Phthalates (DIBP)	NA	NA	NA

Remarks:	ppm = Parts per million based on dry weight of sample (1 mg/kg = 0.0001%)		
	µg/cm ² = Microgram per square centimeter		
	mg/kg with 50 cm ² = Milligram per kilogram with 50 square centimetre		
	ND = Not detected (<MDL)	NA = Not applicable	NR = Not requested
	MDL = Method Detection Limit		

TEST REPORT

Job No./Report No TR2524633-RV1

Date: 28 August 2024

Page 35 of 104

Test Item(s):	RESULTS		
	6.10	6.11	6.12
Cadmium (Cd)	ND	ND	ND
Lead (Pb)	ND	ND	ND
Mercury (Hg)	ND	ND	ND
Hexavalent Chromium (Cr(VI)) (ppm) (for non metal)	NA	ND	ND
Hexavalent Chromium (Cr(VI)) ($\mu\text{g}/\text{cm}^2$) (for metal)	ND	NA	NA
Flame Retardants			
Sum of PBBs	NA	ND	ND
Monobromobiphenyl	NA	ND	ND
Dibromobiphenyl	NA	ND	ND
Tribromobiphenyl	NA	ND	ND
Tetrabromobiphenyl	NA	ND	ND
Pentabromobiphenyl	NA	ND	ND
Hexabromobiphenyl	NA	ND	ND
Heptabromobiphenyl	NA	ND	ND
Octabromobiphenyl	NA	ND	ND
Nonabromobiphenyl	NA	ND	ND
Decabromobiphenyl	NA	ND	ND
Sum of PBDEs	NA	ND	ND
Monobromodiphenyl ether	NA	ND	ND
Dibromodiphenyl ether	NA	ND	ND
Tribromodiphenyl ether	NA	ND	ND
Tetrabromodiphenyl ether	NA	ND	ND
Pentabromodiphenyl ether	NA	ND	ND
Hexabromodiphenyl ether	NA	ND	ND
Heptabromodiphenyl ether	NA	ND	ND
Octabromodiphenyl ether	NA	ND	ND
Nonabromodiphenyl ether	NA	ND	ND
Decabromodiphenyl ether	NA	ND	ND
Phthalates	NA	NA	NA
Dibutyl phthalate (DBP)	NA	NA	NA
Butyl benzyl phthalate (BBP)	NA	NA	NA
Bis (2-ethylhexyl) phthalate (DEHP)	NA	NA	NA
Diisobutyl Phthalates (DIBP)	NA	NA	NA

Remarks:	ppm = Parts per million based on dry weight of sample (1 mg/kg = 0.0001%)		
	$\mu\text{g}/\text{cm}^2$ = Microgram per square centimeter		
	mg/kg with 50 cm ² = Milligram per kilogram with 50 square centimetre		
	ND = Not detected (<MDL)	NA = Not applicable	NR = Not requested
	MDL = Method Detection Limit		

TEST REPORT

Job No./Report No TR2524633-RV1

Date: 28 August 2024

Page 36 of 104

<u>Test Item(s):</u>	<u>RESULTS</u>		
	<u>6.13</u>	<u>6.14</u>	<u>6.15</u>
Cadmium (Cd)	ND	ND	ND
Lead (Pb)	ND	ND	ND
Mercury (Hg)	ND	ND	ND
Hexavalent Chromium (Cr(VI)) (ppm) (for non metal)	ND	ND	ND
Hexavalent Chromium (Cr(VI)) ($\mu\text{g}/\text{cm}^2$) (for metal)	NA	NA	NA
Flame Retardants			
Sum of PBBs	ND	ND	ND
Monobromobiphenyl	ND	ND	ND
Dibromobiphenyl	ND	ND	ND
Tribromobiphenyl	ND	ND	ND
Tetrabromobiphenyl	ND	ND	ND
Pentabromobiphenyl	ND	ND	ND
Hexabromobiphenyl	ND	ND	ND
Heptabromobiphenyl	ND	ND	ND
Octabromobiphenyl	ND	ND	ND
Nonabromobiphenyl	ND	ND	ND
Decabromobiphenyl	ND	ND	ND
Sum of PBDEs	ND	ND	ND
Monobromodiphenyl ether	ND	ND	ND
Dibromodiphenyl ether	ND	ND	ND
Tribromodiphenyl ether	ND	ND	ND
Tetrabromodiphenyl ether	ND	ND	ND
Pentabromodiphenyl ether	ND	ND	ND
Hexabromodiphenyl ether	ND	ND	ND
Heptabromodiphenyl ether	ND	ND	ND
Octabromodiphenyl ether	ND	ND	ND
Nonabromodiphenyl ether	ND	ND	ND
Decabromodiphenyl ether	ND	ND	ND
Phthalates	ND	ND	ND
Dibutyl phthalate (DBP)	ND	ND	ND
Butyl benzyl phthalate (BBP)	ND	ND	ND
Bis (2-ethylhexyl) phthalate (DEHP)	ND	ND	ND
Diisobutyl Phthalates (DIBP)	ND	ND	ND

Remarks:	ppm = Parts per million based on dry weight of sample (1 mg/kg = 0.0001%)		
	$\mu\text{g}/\text{cm}^2$ = Microgram per square centimeter		
	mg/kg with 50 cm ² = Milligram per kilogram with 50 square centimetre		
	ND = Not detected (<MDL)	NA = Not applicable	NR = Not requested
	MDL = Method Detection Limit		

TEST REPORT

Job No./Report No TR2524633-RV1

Date: 28 August 2024

Page 37 of 104

Test Item(s):	RESULTS		
	6.16	6.17	6.18
Cadmium (Cd)	ND	ND	ND
Lead (Pb)	ND	ND	ND
Mercury (Hg)	ND	ND	ND
Hexavalent Chromium (Cr(VI)) (ppm) (for non metal)	ND	ND	ND
Hexavalent Chromium (Cr(VI)) (µg/cm ²) (for metal)	NA	NA	NA
Flame Retardants			
Sum of PBBs	ND	ND	ND
Monobromobiphenyl	ND	ND	ND
Dibromobiphenyl	ND	ND	ND
Tribromobiphenyl	ND	ND	ND
Tetrabromobiphenyl	ND	ND	ND
Pentabromobiphenyl	ND	ND	ND
Hexabromobiphenyl	ND	ND	ND
Heptabromobiphenyl	ND	ND	ND
Octabromobiphenyl	ND	ND	ND
Nonabromobiphenyl	ND	ND	ND
Decabromobiphenyl	ND	ND	ND
Sum of PBDEs	ND	ND	ND
Monobromodiphenyl ether	ND	ND	ND
Dibromodiphenyl ether	ND	ND	ND
Tribromodiphenyl ether	ND	ND	ND
Tetrabromodiphenyl ether	ND	ND	ND
Pentabromodiphenyl ether	ND	ND	ND
Hexabromodiphenyl ether	ND	ND	ND
Heptabromodiphenyl ether	ND	ND	ND
Octabromodiphenyl ether	ND	ND	ND
Nonabromodiphenyl ether	ND	ND	ND
Decabromodiphenyl ether	ND	ND	ND
Phthalates	ND	ND	ND
Dibutyl phthalate (DBP)	ND	ND	ND
Butyl benzyl phthalate (BBP)	ND	ND	ND
Bis (2-ethylhexyl) phthalate (DEHP)	ND	ND	ND
Diisobutyl Phthalates (DIBP)	ND	ND	ND

Remarks:	ppm = Parts per million based on dry weight of sample (1 mg/kg = 0.0001%)		
	µg/cm ² = Microgram per square centimeter		
	mg/kg with 50 cm ² = Milligram per kilogram with 50 square centimetre		
	ND = Not detected (<MDL)	NA = Not applicable	NR = Not requested
	MDL = Method Detection Limit		

TEST REPORT

Job No./Report No TR2524633-RV1

Date: 28 August 2024

Page 38 of 104

Test Item(s):	RESULTS		
	6.19	6.20	6.21
Cadmium (Cd)	ND	ND	ND
Lead (Pb)	ND	ND	ND
Mercury (Hg)	ND	ND	ND
Hexavalent Chromium (Cr(VI)) (ppm) (for non metal)	NA	NA	NA
Hexavalent Chromium (Cr(VI)) ($\mu\text{g}/\text{cm}^2$) (for metal)	ND	ND	ND
Flame Retardants			
Sum of PBBs	NA	NA	NA
Monobromobiphenyl	NA	NA	NA
Dibromobiphenyl	NA	NA	NA
Tribromobiphenyl	NA	NA	NA
Tetrabromobiphenyl	NA	NA	NA
Pentabromobiphenyl	NA	NA	NA
Hexabromobiphenyl	NA	NA	NA
Heptabromobiphenyl	NA	NA	NA
Octabromobiphenyl	NA	NA	NA
Nonabromobiphenyl	NA	NA	NA
Decabromobiphenyl	NA	NA	NA
Sum of PBDEs	NA	NA	NA
Monobromodiphenyl ether	NA	NA	NA
Dibromodiphenyl ether	NA	NA	NA
Tribromodiphenyl ether	NA	NA	NA
Tetrabromodiphenyl ether	NA	NA	NA
Pentabromodiphenyl ether	NA	NA	NA
Hexabromodiphenyl ether	NA	NA	NA
Heptabromodiphenyl ether	NA	NA	NA
Octabromodiphenyl ether	NA	NA	NA
Nonabromodiphenyl ether	NA	NA	NA
Decabromodiphenyl ether	NA	NA	NA
Phthalates	NA	NA	NA
Dibutyl phthalate (DBP)	NA	NA	NA
Butyl benzyl phthalate (BBP)	NA	NA	NA
Bis (2-ethylhexyl) phthalate (DEHP)	NA	NA	NA
Diisobutyl Phthalates (DIBP)	NA	NA	NA

Remarks:	ppm = Parts per million based on dry weight of sample (1 mg/kg = 0.0001%)		
	$\mu\text{g}/\text{cm}^2$ = Microgram per square centimeter		
	mg/kg with 50 cm ² = Milligram per kilogram with 50 square centimetre		
	ND = Not detected (<MDL)	NA = Not applicable	NR = Not requested
	MDL = Method Detection Limit		

TEST REPORT

Job No./Report No TR2524633-RV1

Date: 28 August 2024

Page 39 of 104

Test Item(s):	RESULTS		
	6.22	6.23	6.24
Cadmium (Cd)	ND	ND	ND
Lead (Pb)	ND	ND	ND
Mercury (Hg)	ND	ND	ND
Hexavalent Chromium (Cr(VI)) (ppm) (for non metal)	NA	NA	NA
Hexavalent Chromium (Cr(VI)) ($\mu\text{g}/\text{cm}^2$) (for metal)	ND	ND	ND
Flame Retardants			
Sum of PBBs	NA	NA	NA
Monobromobiphenyl	NA	NA	NA
Dibromobiphenyl	NA	NA	NA
Tribromobiphenyl	NA	NA	NA
Tetrabromobiphenyl	NA	NA	NA
Pentabromobiphenyl	NA	NA	NA
Hexabromobiphenyl	NA	NA	NA
Heptabromobiphenyl	NA	NA	NA
Octabromobiphenyl	NA	NA	NA
Nonabromobiphenyl	NA	NA	NA
Decabromobiphenyl	NA	NA	NA
Sum of PBDEs	NA	NA	NA
Monobromodiphenyl ether	NA	NA	NA
Dibromodiphenyl ether	NA	NA	NA
Tribromodiphenyl ether	NA	NA	NA
Tetrabromodiphenyl ether	NA	NA	NA
Pentabromodiphenyl ether	NA	NA	NA
Hexabromodiphenyl ether	NA	NA	NA
Heptabromodiphenyl ether	NA	NA	NA
Octabromodiphenyl ether	NA	NA	NA
Nonabromodiphenyl ether	NA	NA	NA
Decabromodiphenyl ether	NA	NA	NA
Phthalates	NA	NA	NA
Dibutyl phthalate (DBP)	NA	NA	NA
Butyl benzyl phthalate (BBP)	NA	NA	NA
Bis (2-ethylhexyl) phthalate (DEHP)	NA	NA	NA
Diisobutyl Phthalates (DIBP)	NA	NA	NA

Remarks:	ppm = Parts per million based on dry weight of sample (1 mg/kg = 0.0001%)		
	$\mu\text{g}/\text{cm}^2$ = Microgram per square centimeter		
	mg/kg with 50 cm ² = Milligram per kilogram with 50 square centimetre		
	ND = Not detected (<MDL)	NA = Not applicable	NR = Not requested
	MDL = Method Detection Limit		

TEST REPORT

Job No./Report No TR2524633-RV1

Date: 28 August 2024

Page 40 of 104

Test Item(s):	RESULTS
	<u>6.25</u>
Cadmium (Cd)	ND
Lead (Pb)	ND
Mercury (Hg)	ND
Hexavalent Chromium (Cr(VI)) (ppm) (for non metal)	NA
Hexavalent Chromium (Cr(VI)) ($\mu\text{g}/\text{cm}^2$) (for metal)	ND
Flame Retardants	
Sum of PBBs	NA
Monobromobiphenyl	NA
Dibromobiphenyl	NA
Tribromobiphenyl	NA
Tetrabromobiphenyl	NA
Pentabromobiphenyl	NA
Hexabromobiphenyl	NA
Heptabromobiphenyl	NA
Octabromobiphenyl	NA
Nonabromobiphenyl	NA
Decabromobiphenyl	NA
Sum of PBDEs	NA
Monobromodiphenyl ether	NA
Dibromodiphenyl ether	NA
Tribromodiphenyl ether	NA
Tetrabromodiphenyl ether	NA
Pentabromodiphenyl ether	NA
Hexabromodiphenyl ether	NA
Heptabromodiphenyl ether	NA
Octabromodiphenyl ether	NA
Nonabromodiphenyl ether	NA
Decabromodiphenyl ether	NA
Phthalates	NA
Dibutyl phthalate (DBP)	NA
Butyl benzyl phthalate (BBP)	NA
Bis (2-ethylhexyl) phthalate (DEHP)	NA
Diisobutyl Phthalates (DIBP)	NA

Remarks:	ppm = Parts per million based on dry weight of sample (1 mg/kg = 0.0001%)		
	$\mu\text{g}/\text{cm}^2$ = Microgram per square centimeter		
	mg/kg with 50 cm ² = Milligram per kilogram with 50 square centimetre		
	ND = Not detected (<MDL)	NA = Not applicable	NR = Not requested
	MDL = Method Detection Limit		

TEST REPORT

Job No./Report No TR2524633-RV1

Date: 28 August 2024

Page 41 of 104

Test Item(s):	RESULTS		
	7.1	7.2	7.3
Cadmium (Cd)	ND	ND	ND
Lead (Pb)	ND	ND	ND
Mercury (Hg)	ND	ND	ND
Hexavalent Chromium (Cr(VI)) (ppm) (for non metal)	ND	ND	ND
Hexavalent Chromium (Cr(VI)) (µg/cm ²) (for metal)	NA	NA	NA
Flame Retardants			
Sum of PBBs	ND	ND	ND
Monobromobiphenyl	ND	ND	ND
Dibromobiphenyl	ND	ND	ND
Tribromobiphenyl	ND	ND	ND
Tetrabromobiphenyl	ND	ND	ND
Pentabromobiphenyl	ND	ND	ND
Hexabromobiphenyl	ND	ND	ND
Heptabromobiphenyl	ND	ND	ND
Octabromobiphenyl	ND	ND	ND
Nonabromobiphenyl	ND	ND	ND
Decabromobiphenyl	ND	ND	ND
Sum of PBDEs	ND	ND	ND
Monobromodiphenyl ether	ND	ND	ND
Dibromodiphenyl ether	ND	ND	ND
Tribromodiphenyl ether	ND	ND	ND
Tetrabromodiphenyl ether	ND	ND	ND
Pentabromodiphenyl ether	ND	ND	ND
Hexabromodiphenyl ether	ND	ND	ND
Heptabromodiphenyl ether	ND	ND	ND
Octabromodiphenyl ether	ND	ND	ND
Nonabromodiphenyl ether	ND	ND	ND
Decabromodiphenyl ether	ND	ND	ND
Phthalates	ND	ND	ND
Dibutyl phthalate (DBP)	ND	ND	ND
Butyl benzyl phthalate (BBP)	ND	ND	ND
Bis (2-ethylhexyl) phthalate (DEHP)	ND	ND	ND
Diisobutyl Phthalates (DIBP)	ND	ND	ND

Remarks:	ppm = Parts per million based on dry weight of sample (1 mg/kg = 0.0001%)		
	µg/cm ² = Microgram per square centimeter		
	mg/kg with 50 cm ² = Milligram per kilogram with 50 square centimetre		
	ND = Not detected (<MDL)	NA = Not applicable	NR = Not requested
	MDL = Method Detection Limit		

TEST REPORT

Job No./Report No TR2524633-RV1

Date: 28 August 2024

Page 42 of 104

Test Item(s):	RESULTS		
	7.4	7.5	7.6
Cadmium (Cd)	ND	ND	ND
Lead (Pb)	ND	ND	ND
Mercury (Hg)	ND	ND	ND
Hexavalent Chromium (Cr(VI)) (ppm) (for non metal)	NA	ND	ND
Hexavalent Chromium (Cr(VI)) ($\mu\text{g}/\text{cm}^2$) (for metal)	ND	NA	NA
Flame Retardants			
Sum of PBBs	NA	ND	ND
Monobromobiphenyl	NA	ND	ND
Dibromobiphenyl	NA	ND	ND
Tribromobiphenyl	NA	ND	ND
Tetrabromobiphenyl	NA	ND	ND
Pentabromobiphenyl	NA	ND	ND
Hexabromobiphenyl	NA	ND	ND
Heptabromobiphenyl	NA	ND	ND
Octabromobiphenyl	NA	ND	ND
Nonabromobiphenyl	NA	ND	ND
Decabromobiphenyl	NA	ND	ND
Sum of PBDEs	NA	ND	ND
Monobromodiphenyl ether	NA	ND	ND
Dibromodiphenyl ether	NA	ND	ND
Tribromodiphenyl ether	NA	ND	ND
Tetrabromodiphenyl ether	NA	ND	ND
Pentabromodiphenyl ether	NA	ND	ND
Hexabromodiphenyl ether	NA	ND	ND
Heptabromodiphenyl ether	NA	ND	ND
Octabromodiphenyl ether	NA	ND	ND
Nonabromodiphenyl ether	NA	ND	ND
Decabromodiphenyl ether	NA	ND	ND
Phthalates	NA	ND	ND
Dibutyl phthalate (DBP)	NA	ND	ND
Butyl benzyl phthalate (BBP)	NA	ND	ND
Bis (2-ethylhexyl) phthalate (DEHP)	NA	ND	ND
Diisobutyl Phthalates (DIBP)	NA	ND	ND

Remarks:	ppm = Parts per million based on dry weight of sample (1 mg/kg = 0.0001%)		
	$\mu\text{g}/\text{cm}^2$ = Microgram per square centimeter		
	mg/kg with 50 cm ² = Milligram per kilogram with 50 square centimetre		
	ND = Not detected (<MDL)	NA = Not applicable	NR = Not requested
	MDL = Method Detection Limit		

TEST REPORT

Job No./Report No TR2524633-RV1

Date: 28 August 2024

Page 43 of 104

Test Item(s):	RESULTS		
	7.7	7.8	7.9
Cadmium (Cd)	ND	ND	ND
Lead (Pb)	ND	ND	ND
Mercury (Hg)	ND	ND	ND
Hexavalent Chromium (Cr(VI)) (ppm) (for non metal)	ND	NA	NA
Hexavalent Chromium (Cr(VI)) (µg/cm ²) (for metal)	NA	ND	ND
Flame Retardants			
Sum of PBBs	ND	NA	NA
Monobromobiphenyl	ND	NA	NA
Dibromobiphenyl	ND	NA	NA
Tribromobiphenyl	ND	NA	NA
Tetrabromobiphenyl	ND	NA	NA
Pentabromobiphenyl	ND	NA	NA
Hexabromobiphenyl	ND	NA	NA
Heptabromobiphenyl	ND	NA	NA
Octabromobiphenyl	ND	NA	NA
Nonabromobiphenyl	ND	NA	NA
Decabromobiphenyl	ND	NA	NA
Sum of PBDEs	ND	NA	NA
Monobromodiphenyl ether	ND	NA	NA
Dibromodiphenyl ether	ND	NA	NA
Tribromodiphenyl ether	ND	NA	NA
Tetrabromodiphenyl ether	ND	NA	NA
Pentabromodiphenyl ether	ND	NA	NA
Hexabromodiphenyl ether	ND	NA	NA
Heptabromodiphenyl ether	ND	NA	NA
Octabromodiphenyl ether	ND	NA	NA
Nonabromodiphenyl ether	ND	NA	NA
Decabromodiphenyl ether	ND	NA	NA
Phthalates	ND	NA	NA
Dibutyl phthalate (DBP)	ND	NA	NA
Butyl benzyl phthalate (BBP)	ND	NA	NA
Bis (2-ethylhexyl) phthalate (DEHP)	ND	NA	NA
Diisobutyl Phthalates (DIBP)	ND	NA	NA

Remarks:	ppm = Parts per million based on dry weight of sample (1 mg/kg = 0.0001%)		
	µg/cm ² = Microgram per square centimeter		
	mg/kg with 50 cm ² = Milligram per kilogram with 50 square centimetre		
	ND = Not detected (<MDL)	NA = Not applicable	NR = Not requested
	MDL = Method Detection Limit		

TEST REPORT

Job No./Report No TR2524633-RV1

Date: 28 August 2024

Page 44 of 104

Test Item(s):	RESULTS		
	7.10	7.11	7.12
Cadmium (Cd)	ND	ND	ND
Lead (Pb)	ND	ND	ND
Mercury (Hg)	ND	ND	ND
Hexavalent Chromium (Cr(VI)) (ppm) (for non metal)	ND	ND	ND
Hexavalent Chromium (Cr(VI)) ($\mu\text{g}/\text{cm}^2$) (for metal)	NA	NA	NA
Flame Retardants			
Sum of PBBs	ND	ND	NA
Monobromobiphenyl	ND	ND	NA
Dibromobiphenyl	ND	ND	NA
Tribromobiphenyl	ND	ND	NA
Tetrabromobiphenyl	ND	ND	NA
Pentabromobiphenyl	ND	ND	NA
Hexabromobiphenyl	ND	ND	NA
Heptabromobiphenyl	ND	ND	NA
Octabromobiphenyl	ND	ND	NA
Nonabromobiphenyl	ND	ND	NA
Decabromobiphenyl	ND	ND	NA
Sum of PBDEs	ND	ND	NA
Monobromodiphenyl ether	ND	ND	NA
Dibromodiphenyl ether	ND	ND	NA
Tribromodiphenyl ether	ND	ND	NA
Tetrabromodiphenyl ether	ND	ND	NA
Pentabromodiphenyl ether	ND	ND	NA
Hexabromodiphenyl ether	ND	ND	NA
Heptabromodiphenyl ether	ND	ND	NA
Octabromodiphenyl ether	ND	ND	NA
Nonabromodiphenyl ether	ND	ND	NA
Decabromodiphenyl ether	ND	ND	NA
Phthalates	ND	ND	NA
Dibutyl phthalate (DBP)	ND	ND	NA
Butyl benzyl phthalate (BBP)	ND	ND	NA
Bis (2-ethylhexyl) phthalate (DEHP)	ND	ND	NA
Diisobutyl Phthalates (DIBP)	ND	ND	NA

Remarks:	ppm = Parts per million based on dry weight of sample (1 mg/kg = 0.0001%)		
	$\mu\text{g}/\text{cm}^2$ = Microgram per square centimeter		
	mg/kg with 50 cm ² = Milligram per kilogram with 50 square centimetre		
	ND = Not detected (<MDL)	NA = Not applicable	NR = Not requested
	MDL = Method Detection Limit		

TEST REPORT

Job No./Report No TR2524633-RV1

Date: 28 August 2024

Page 45 of 104

Test Item(s):	RESULTS		
	7.13	7.14	7.15
Cadmium (Cd)	ND	ND	ND
Lead (Pb)	ND	ND	ND
Mercury (Hg)	ND	ND	ND
Hexavalent Chromium (Cr(VI)) (ppm) (for non metal)	ND	ND	NA
Hexavalent Chromium (Cr(VI)) ($\mu\text{g}/\text{cm}^2$) (for metal)	NA	NA	ND
Flame Retardants			
Sum of PBBs	NA	ND	NA
Monobromobiphenyl	NA	ND	NA
Dibromobiphenyl	NA	ND	NA
Tribromobiphenyl	NA	ND	NA
Tetrabromobiphenyl	NA	ND	NA
Pentabromobiphenyl	NA	ND	NA
Hexabromobiphenyl	NA	ND	NA
Heptabromobiphenyl	NA	ND	NA
Octabromobiphenyl	NA	ND	NA
Nonabromobiphenyl	NA	ND	NA
Decabromobiphenyl	NA	ND	NA
Sum of PBDEs	NA	ND	NA
Monobromodiphenyl ether	NA	ND	NA
Dibromodiphenyl ether	NA	ND	NA
Tribromodiphenyl ether	NA	ND	NA
Tetrabromodiphenyl ether	NA	ND	NA
Pentabromodiphenyl ether	NA	ND	NA
Hexabromodiphenyl ether	NA	ND	NA
Heptabromodiphenyl ether	NA	ND	NA
Octabromodiphenyl ether	NA	ND	NA
Nonabromodiphenyl ether	NA	ND	NA
Decabromodiphenyl ether	NA	ND	NA
Phthalates	NA	ND	NA
Dibutyl phthalate (DBP)	NA	ND	NA
Butyl benzyl phthalate (BBP)	NA	ND	NA
Bis (2-ethylhexyl) phthalate (DEHP)	NA	ND	NA
Diisobutyl Phthalates (DIBP)	NA	ND	NA

Remarks:	ppm = Parts per million based on dry weight of sample (1 mg/kg = 0.0001%)		
	$\mu\text{g}/\text{cm}^2$ = Microgram per square centimeter		
	mg/kg with 50 cm ² = Milligram per kilogram with 50 square centimetre		
	ND = Not detected (<MDL)	NA = Not applicable	NR = Not requested
	MDL = Method Detection Limit		

TEST REPORT

Job No./Report No TR2524633-RV1

Date: 28 August 2024

Page 46 of 104

Test Item(s):	RESULTS		
	7.16	7.17	7.18
Cadmium (Cd)	ND	ND	ND
Lead (Pb)	ND	ND	ND
Mercury (Hg)	ND	ND	ND
Hexavalent Chromium (Cr(VI)) (ppm) (for non metal)	NA	ND	NA
Hexavalent Chromium (Cr(VI)) ($\mu\text{g}/\text{cm}^2$) (for metal)	ND	NA	ND
Flame Retardants			
Sum of PBBs	NA	ND	NA
Monobromobiphenyl	NA	ND	NA
Dibromobiphenyl	NA	ND	NA
Tribromobiphenyl	NA	ND	NA
Tetrabromobiphenyl	NA	ND	NA
Pentabromobiphenyl	NA	ND	NA
Hexabromobiphenyl	NA	ND	NA
Heptabromobiphenyl	NA	ND	NA
Octabromobiphenyl	NA	ND	NA
Nonabromobiphenyl	NA	ND	NA
Decabromobiphenyl	NA	ND	NA
Sum of PBDEs	NA	ND	NA
Monobromodiphenyl ether	NA	ND	NA
Dibromodiphenyl ether	NA	ND	NA
Tribromodiphenyl ether	NA	ND	NA
Tetrabromodiphenyl ether	NA	ND	NA
Pentabromodiphenyl ether	NA	ND	NA
Hexabromodiphenyl ether	NA	ND	NA
Heptabromodiphenyl ether	NA	ND	NA
Octabromodiphenyl ether	NA	ND	NA
Nonabromodiphenyl ether	NA	ND	NA
Decabromodiphenyl ether	NA	ND	NA
Phthalates	NA	ND	NA
Dibutyl phthalate (DBP)	NA	ND	NA
Butyl benzyl phthalate (BBP)	NA	ND	NA
Bis (2-ethylhexyl) phthalate (DEHP)	NA	ND	NA
Diisobutyl Phthalates (DIBP)	NA	ND	NA

Remarks:	ppm = Parts per million based on dry weight of sample (1 mg/kg = 0.0001%)		
	$\mu\text{g}/\text{cm}^2$ = Microgram per square centimeter		
	mg/kg with 50 cm ² = Milligram per kilogram with 50 square centimetre		
	ND = Not detected (<MDL)	NA = Not applicable	NR = Not requested
	MDL = Method Detection Limit		

TEST REPORT

Job No./Report No TR2524633-RV1

Date: 28 August 2024

Page 47 of 104

Test Item(s):	RESULTS		
	7.19	7.20	7.21
Cadmium (Cd)	ND	ND	ND
Lead (Pb)	ND	ND	ND
Mercury (Hg)	ND	ND	ND
Hexavalent Chromium (Cr(VI)) (ppm) (for non metal)	NA	ND	ND
Hexavalent Chromium (Cr(VI)) (µg/cm ²) (for metal)	ND	NA	NA
Flame Retardants			
Sum of PBBs	NA	ND	ND
Monobromobiphenyl	NA	ND	ND
Dibromobiphenyl	NA	ND	ND
Tribromobiphenyl	NA	ND	ND
Tetrabromobiphenyl	NA	ND	ND
Pentabromobiphenyl	NA	ND	ND
Hexabromobiphenyl	NA	ND	ND
Heptabromobiphenyl	NA	ND	ND
Octabromobiphenyl	NA	ND	ND
Nonabromobiphenyl	NA	ND	ND
Decabromobiphenyl	NA	ND	ND
Sum of PBDEs	NA	ND	ND
Monobromodiphenyl ether	NA	ND	ND
Dibromodiphenyl ether	NA	ND	ND
Tribromodiphenyl ether	NA	ND	ND
Tetrabromodiphenyl ether	NA	ND	ND
Pentabromodiphenyl ether	NA	ND	ND
Hexabromodiphenyl ether	NA	ND	ND
Heptabromodiphenyl ether	NA	ND	ND
Octabromodiphenyl ether	NA	ND	ND
Nonabromodiphenyl ether	NA	ND	ND
Decabromodiphenyl ether	NA	ND	ND
Phthalates	NA	ND	ND
Dibutyl phthalate (DBP)	NA	ND	ND
Butyl benzyl phthalate (BBP)	NA	ND	ND
Bis (2-ethylhexyl) phthalate (DEHP)	NA	ND	ND
Diisobutyl Phthalates (DIBP)	NA	ND	ND

Remarks:	ppm = Parts per million based on dry weight of sample (1 mg/kg = 0.0001%)		
	µg/cm ² = Microgram per square centimeter		
	mg/kg with 50 cm ² = Milligram per kilogram with 50 square centimetre		
	ND = Not detected (<MDL)	NA = Not applicable	NR = Not requested
	MDL = Method Detection Limit		

TEST REPORT

Job No./Report No TR2524633-RV1

Date: 28 August 2024

Page 48 of 104

Test Item(s):	RESULTS		
	7.22	7.23	7.24
Cadmium (Cd)	ND	ND	ND
Lead (Pb)	ND	ND	ND
Mercury (Hg)	ND	ND	ND
Hexavalent Chromium (Cr(VI)) (ppm) (for non metal)	ND	NA	NA
Hexavalent Chromium (Cr(VI)) ($\mu\text{g}/\text{cm}^2$) (for metal)	NA	ND	ND
Flame Retardants			
Sum of PBBs	ND	NA	NA
Monobromobiphenyl	ND	NA	NA
Dibromobiphenyl	ND	NA	NA
Tribromobiphenyl	ND	NA	NA
Tetrabromobiphenyl	ND	NA	NA
Pentabromobiphenyl	ND	NA	NA
Hexabromobiphenyl	ND	NA	NA
Heptabromobiphenyl	ND	NA	NA
Octabromobiphenyl	ND	NA	NA
Nonabromobiphenyl	ND	NA	NA
Decabromobiphenyl	ND	NA	NA
Sum of PBDEs	ND	NA	NA
Monobromodiphenyl ether	ND	NA	NA
Dibromodiphenyl ether	ND	NA	NA
Tribromodiphenyl ether	ND	NA	NA
Tetrabromodiphenyl ether	ND	NA	NA
Pentabromodiphenyl ether	ND	NA	NA
Hexabromodiphenyl ether	ND	NA	NA
Heptabromodiphenyl ether	ND	NA	NA
Octabromodiphenyl ether	ND	NA	NA
Nonabromodiphenyl ether	ND	NA	NA
Decabromodiphenyl ether	ND	NA	NA
Phthalates	ND	NA	NA
Dibutyl phthalate (DBP)	ND	NA	NA
Butyl benzyl phthalate (BBP)	ND	NA	NA
Bis (2-ethylhexyl) phthalate (DEHP)	ND	NA	NA
Diisobutyl Phthalates (DIBP)	ND	NA	NA

Remarks:	ppm = Parts per million based on dry weight of sample (1 mg/kg = 0.0001%)		
	$\mu\text{g}/\text{cm}^2$ = Microgram per square centimeter		
	mg/kg with 50 cm^2 = Milligram per kilogram with 50 square centimetre		
	ND = Not detected (<MDL)	NA = Not applicable	NR = Not requested
	MDL = Method Detection Limit		

TEST REPORT

Job No./Report No TR2524633-RV1

Date: 28 August 2024

Page 49 of 104

Test Item(s):	RESULTS		
	7.25	7.26	7.27
Cadmium (Cd)	ND	ND	ND
Lead (Pb)	ND	ND	ND
Mercury (Hg)	ND	ND	ND
Hexavalent Chromium (Cr(VI)) (ppm) (for non metal)	ND	ND	ND
Hexavalent Chromium (Cr(VI)) (µg/cm ²) (for metal)	NA	NA	NA
Flame Retardants			
Sum of PBBs	NA	NA	NA
Monobromobiphenyl	NA	NA	NA
Dibromobiphenyl	NA	NA	NA
Tribromobiphenyl	NA	NA	NA
Tetrabromobiphenyl	NA	NA	NA
Pentabromobiphenyl	NA	NA	NA
Hexabromobiphenyl	NA	NA	NA
Heptabromobiphenyl	NA	NA	NA
Octabromobiphenyl	NA	NA	NA
Nonabromobiphenyl	NA	NA	NA
Decabromobiphenyl	NA	NA	NA
Sum of PBDEs	NA	NA	NA
Monobromodiphenyl ether	NA	NA	NA
Dibromodiphenyl ether	NA	NA	NA
Tribromodiphenyl ether	NA	NA	NA
Tetrabromodiphenyl ether	NA	NA	NA
Pentabromodiphenyl ether	NA	NA	NA
Hexabromodiphenyl ether	NA	NA	NA
Heptabromodiphenyl ether	NA	NA	NA
Octabromodiphenyl ether	NA	NA	NA
Nonabromodiphenyl ether	NA	NA	NA
Decabromodiphenyl ether	NA	NA	NA
Phthalates	NA	NA	NA
Dibutyl phthalate (DBP)	NA	NA	NA
Butyl benzyl phthalate (BBP)	NA	NA	NA
Bis (2-ethylhexyl) phthalate (DEHP)	NA	NA	NA
Diisobutyl Phthalates (DIBP)	NA	NA	NA

Remarks:	ppm = Parts per million based on dry weight of sample (1 mg/kg = 0.0001%)		
	µg/cm ² = Microgram per square centimeter		
	mg/kg with 50 cm ² = Milligram per kilogram with 50 square centimetre		
	ND = Not detected (<MDL)	NA = Not applicable	NR = Not requested
	MDL = Method Detection Limit		

TEST REPORT

Job No./Report No TR2524633-RV1

Date: 28 August 2024

Page 50 of 104

Test Item(s):	RESULTS		
	7.28	7.29	7.30
Cadmium (Cd)	ND	ND	ND
Lead (Pb)	ND	ND	ND
Mercury (Hg)	ND	ND	ND
Hexavalent Chromium (Cr(VI)) (ppm) (for non metal)	ND	ND	ND
Hexavalent Chromium (Cr(VI)) (µg/cm ²) (for metal)	NA	NA	NA
Flame Retardants			
Sum of PBBs	NA	NA	NA
Monobromobiphenyl	NA	NA	NA
Dibromobiphenyl	NA	NA	NA
Tribromobiphenyl	NA	NA	NA
Tetrabromobiphenyl	NA	NA	NA
Pentabromobiphenyl	NA	NA	NA
Hexabromobiphenyl	NA	NA	NA
Heptabromobiphenyl	NA	NA	NA
Octabromobiphenyl	NA	NA	NA
Nonabromobiphenyl	NA	NA	NA
Decabromobiphenyl	NA	NA	NA
Sum of PBDEs	NA	NA	NA
Monobromodiphenyl ether	NA	NA	NA
Dibromodiphenyl ether	NA	NA	NA
Tribromodiphenyl ether	NA	NA	NA
Tetrabromodiphenyl ether	NA	NA	NA
Pentabromodiphenyl ether	NA	NA	NA
Hexabromodiphenyl ether	NA	NA	NA
Heptabromodiphenyl ether	NA	NA	NA
Octabromodiphenyl ether	NA	NA	NA
Nonabromodiphenyl ether	NA	NA	NA
Decabromodiphenyl ether	NA	NA	NA
Phthalates	NA	NA	NA
Dibutyl phthalate (DBP)	NA	NA	NA
Butyl benzyl phthalate (BBP)	NA	NA	NA
Bis (2-ethylhexyl) phthalate (DEHP)	NA	NA	NA
Diisobutyl Phthalates (DIBP)	NA	NA	NA

Remarks:	ppm = Parts per million based on dry weight of sample (1 mg/kg = 0.0001%)		
	µg/cm ² = Microgram per square centimeter		
	mg/kg with 50 cm ² = Milligram per kilogram with 50 square centimetre		
	ND = Not detected (<MDL)	NA = Not applicable	NR = Not requested
	MDL = Method Detection Limit		

TEST REPORT

Job No./Report No TR2524633-RV1

Date: 28 August 2024

Page 51 of 104

Test Item(s):	RESULTS		
	7.31	7.32	7.33
Cadmium (Cd)	ND	ND	ND
Lead (Pb)	ND	ND	ND
Mercury (Hg)	ND	ND	ND
Hexavalent Chromium (Cr(VI)) (ppm) (for non metal)	ND	ND	NA
Hexavalent Chromium (Cr(VI)) ($\mu\text{g}/\text{cm}^2$) (for metal)	NA	NA	ND
Flame Retardants			
Sum of PBBs	NA	ND	NA
Monobromobiphenyl	NA	ND	NA
Dibromobiphenyl	NA	ND	NA
Tribromobiphenyl	NA	ND	NA
Tetrabromobiphenyl	NA	ND	NA
Pentabromobiphenyl	NA	ND	NA
Hexabromobiphenyl	NA	ND	NA
Heptabromobiphenyl	NA	ND	NA
Octabromobiphenyl	NA	ND	NA
Nonabromobiphenyl	NA	ND	NA
Decabromobiphenyl	NA	ND	NA
Sum of PBDEs	NA	ND	NA
Monobromodiphenyl ether	NA	ND	NA
Dibromodiphenyl ether	NA	ND	NA
Tribromodiphenyl ether	NA	ND	NA
Tetrabromodiphenyl ether	NA	ND	NA
Pentabromodiphenyl ether	NA	ND	NA
Hexabromodiphenyl ether	NA	ND	NA
Heptabromodiphenyl ether	NA	ND	NA
Octabromodiphenyl ether	NA	ND	NA
Nonabromodiphenyl ether	NA	ND	NA
Decabromodiphenyl ether	NA	ND	NA
Phthalates	NA	ND	NA
Dibutyl phthalate (DBP)	NA	ND	NA
Butyl benzyl phthalate (BBP)	NA	ND	NA
Bis (2-ethylhexyl) phthalate (DEHP)	NA	ND	NA
Diisobutyl Phthalates (DIBP)	NA	ND	NA

Remarks:	ppm = Parts per million based on dry weight of sample (1 mg/kg = 0.0001%)		
	$\mu\text{g}/\text{cm}^2$ = Microgram per square centimeter		
	mg/kg with 50 cm ² = Milligram per kilogram with 50 square centimetre		
	ND = Not detected (<MDL)	NA = Not applicable	NR = Not requested
	MDL = Method Detection Limit		

TEST REPORT

Job No./Report No TR2524633-RV1

Date: 28 August 2024

Page 52 of 104

Test Item(s):	RESULTS		
	7.34	7.35	7.36
Cadmium (Cd)	ND	ND	ND
Lead (Pb)	ND	ND	ND
Mercury (Hg)	ND	ND	ND
Hexavalent Chromium (Cr(VI)) (ppm) (for non metal)	ND	ND	NA
Hexavalent Chromium (Cr(VI)) ($\mu\text{g}/\text{cm}^2$) (for metal)	NA	NA	ND
Flame Retardants			
Sum of PBBs	ND	ND	NA
Monobromobiphenyl	ND	ND	NA
Dibromobiphenyl	ND	ND	NA
Tribromobiphenyl	ND	ND	NA
Tetrabromobiphenyl	ND	ND	NA
Pentabromobiphenyl	ND	ND	NA
Hexabromobiphenyl	ND	ND	NA
Heptabromobiphenyl	ND	ND	NA
Octabromobiphenyl	ND	ND	NA
Nonabromobiphenyl	ND	ND	NA
Decabromobiphenyl	ND	ND	NA
Sum of PBDEs	ND	ND	NA
Monobromodiphenyl ether	ND	ND	NA
Dibromodiphenyl ether	ND	ND	NA
Tribromodiphenyl ether	ND	ND	NA
Tetrabromodiphenyl ether	ND	ND	NA
Pentabromodiphenyl ether	ND	ND	NA
Hexabromodiphenyl ether	ND	ND	NA
Heptabromodiphenyl ether	ND	ND	NA
Octabromodiphenyl ether	ND	ND	NA
Nonabromodiphenyl ether	ND	ND	NA
Decabromodiphenyl ether	ND	ND	NA
Phthalates	ND	ND	NA
Dibutyl phthalate (DBP)	ND	ND	NA
Butyl benzyl phthalate (BBP)	ND	ND	NA
Bis (2-ethylhexyl) phthalate (DEHP)	ND	ND	NA
Diisobutyl Phthalates (DIBP)	ND	ND	NA

Remarks:	ppm = Parts per million based on dry weight of sample (1 mg/kg = 0.0001%)		
	$\mu\text{g}/\text{cm}^2$ = Microgram per square centimeter		
	mg/kg with 50 cm ² = Milligram per kilogram with 50 square centimetre		
	ND = Not detected (<MDL)	NA = Not applicable	NR = Not requested
	MDL = Method Detection Limit		

TEST REPORT

Job No./Report No TR2524633-RV1

Date: 28 August 2024

Page 53 of 104

Test Item(s):	RESULTS
	<u>7.37</u>
Cadmium (Cd)	ND
Lead (Pb)	ND
Mercury (Hg)	ND
Hexavalent Chromium (Cr(VI)) (ppm) (for non metal)	NA
Hexavalent Chromium (Cr(VI)) ($\mu\text{g}/\text{cm}^2$) (for metal)	ND
Flame Retardants	
Sum of PBBs	NA
Monobromobiphenyl	NA
Dibromobiphenyl	NA
Tribromobiphenyl	NA
Tetrabromobiphenyl	NA
Pentabromobiphenyl	NA
Hexabromobiphenyl	NA
Heptabromobiphenyl	NA
Octabromobiphenyl	NA
Nonabromobiphenyl	NA
Decabromobiphenyl	NA
Sum of PBDEs	NA
Monobromodiphenyl ether	NA
Dibromodiphenyl ether	NA
Tribromodiphenyl ether	NA
Tetrabromodiphenyl ether	NA
Pentabromodiphenyl ether	NA
Hexabromodiphenyl ether	NA
Heptabromodiphenyl ether	NA
Octabromodiphenyl ether	NA
Nonabromodiphenyl ether	NA
Decabromodiphenyl ether	NA
Phthalates	NA
Dibutyl phthalate (DBP)	NA
Butyl benzyl phthalate (BBP)	NA
Bis (2-ethylhexyl) phthalate (DEHP)	NA
Diisobutyl Phthalates (DIBP)	NA

Remarks:	ppm = Parts per million based on dry weight of sample (1 mg/kg = 0.0001%)		
	$\mu\text{g}/\text{cm}^2$ = Microgram per square centimeter		
	mg/kg with 50 cm ² = Milligram per kilogram with 50 square centimetre		
	ND = Not detected (<MDL)	NA = Not applicable	NR = Not requested
	MDL = Method Detection Limit		

TEST REPORT

Job No./Report No TR2524633-RV1

Date: 28 August 2024

Page 54 of 104

Test Item(s):	RESULTS		
	8.1	8.2	8.3
Cadmium (Cd)	ND	ND	ND
Lead (Pb)	ND	ND	ND
Mercury (Hg)	ND	ND	ND
Hexavalent Chromium (Cr(VI)) (ppm) (for non metal)	NA	ND	NA
Hexavalent Chromium (Cr(VI)) ($\mu\text{g}/\text{cm}^2$) (for metal)	ND	NA	ND
Flame Retardants			
Sum of PBBs	NA	ND	NA
Monobromobiphenyl	NA	ND	NA
Dibromobiphenyl	NA	ND	NA
Tribromobiphenyl	NA	ND	NA
Tetrabromobiphenyl	NA	ND	NA
Pentabromobiphenyl	NA	ND	NA
Hexabromobiphenyl	NA	ND	NA
Heptabromobiphenyl	NA	ND	NA
Octabromobiphenyl	NA	ND	NA
Nonabromobiphenyl	NA	ND	NA
Decabromobiphenyl	NA	ND	NA
Sum of PBDEs	NA	ND	NA
Monobromodiphenyl ether	NA	ND	NA
Dibromodiphenyl ether	NA	ND	NA
Tribromodiphenyl ether	NA	ND	NA
Tetrabromodiphenyl ether	NA	ND	NA
Pentabromodiphenyl ether	NA	ND	NA
Hexabromodiphenyl ether	NA	ND	NA
Heptabromodiphenyl ether	NA	ND	NA
Octabromodiphenyl ether	NA	ND	NA
Nonabromodiphenyl ether	NA	ND	NA
Decabromodiphenyl ether	NA	ND	NA
Phthalates	NA	ND	NA
Dibutyl phthalate (DBP)	NA	ND	NA
Butyl benzyl phthalate (BBP)	NA	ND	NA
Bis (2-ethylhexyl) phthalate (DEHP)	NA	ND	NA
Diisobutyl Phthalates (DIBP)	NA	ND	NA

Remarks:	ppm = Parts per million based on dry weight of sample (1 mg/kg = 0.0001%)		
	$\mu\text{g}/\text{cm}^2$ = Microgram per square centimeter		
	mg/kg with 50 cm ² = Milligram per kilogram with 50 square centimetre		
	ND = Not detected (<MDL)	NA = Not applicable	NR = Not requested
	MDL = Method Detection Limit		

TEST REPORT

Job No./Report No TR2524633-RV1

Date: 28 August 2024

Page 55 of 104

<u>Test Item(s):</u>	<u>RESULTS</u>		
	<u>8.4</u>	<u>8.5</u>	<u>8.6</u>
Cadmium (Cd)	ND	ND	ND
Lead (Pb)	ND	ND	ND
Mercury (Hg)	ND	ND	ND
Hexavalent Chromium (Cr(VI)) (ppm) (for non metal)	NA	NA	NA
Hexavalent Chromium (Cr(VI)) ($\mu\text{g}/\text{cm}^2$) (for metal)	ND	ND	ND
Flame Retardants			
Sum of PBBs	NA	NA	NA
Monobromobiphenyl	NA	NA	NA
Dibromobiphenyl	NA	NA	NA
Tribromobiphenyl	NA	NA	NA
Tetrabromobiphenyl	NA	NA	NA
Pentabromobiphenyl	NA	NA	NA
Hexabromobiphenyl	NA	NA	NA
Heptabromobiphenyl	NA	NA	NA
Octabromobiphenyl	NA	NA	NA
Nonabromobiphenyl	NA	NA	NA
Decabromobiphenyl	NA	NA	NA
Sum of PBDEs	NA	NA	NA
Monobromodiphenyl ether	NA	NA	NA
Dibromodiphenyl ether	NA	NA	NA
Tribromodiphenyl ether	NA	NA	NA
Tetrabromodiphenyl ether	NA	NA	NA
Pentabromodiphenyl ether	NA	NA	NA
Hexabromodiphenyl ether	NA	NA	NA
Heptabromodiphenyl ether	NA	NA	NA
Octabromodiphenyl ether	NA	NA	NA
Nonabromodiphenyl ether	NA	NA	NA
Decabromodiphenyl ether	NA	NA	NA
Phthalates	NA	NA	NA
Dibutyl phthalate (DBP)	NA	NA	NA
Butyl benzyl phthalate (BBP)	NA	NA	NA
Bis (2-ethylhexyl) phthalate (DEHP)	NA	NA	NA
Diisobutyl Phthalates (DIBP)	NA	NA	NA

Remarks:	ppm = Parts per million based on dry weight of sample (1 mg/kg = 0.0001%)		
	$\mu\text{g}/\text{cm}^2$ = Microgram per square centimeter		
	mg/kg with 50 cm ² = Milligram per kilogram with 50 square centimetre		
	ND = Not detected (<MDL)	NA = Not applicable	NR = Not requested
	MDL = Method Detection Limit		

TEST REPORT

Job No./Report No TR2524633-RV1

Date: 28 August 2024

Page 56 of 104

Test Item(s):	RESULTS		
	8.7	8.8	8.9
Cadmium (Cd)	ND	ND	ND
Lead (Pb)	ND	ND	ND
Mercury (Hg)	ND	ND	ND
Hexavalent Chromium (Cr(VI)) (ppm) (for non metal)	NA	NA	NA
Hexavalent Chromium (Cr(VI)) ($\mu\text{g}/\text{cm}^2$) (for metal)	ND	ND	ND
Flame Retardants			
Sum of PBBs	NA	NA	NA
Monobromobiphenyl	NA	NA	NA
Dibromobiphenyl	NA	NA	NA
Tribromobiphenyl	NA	NA	NA
Tetrabromobiphenyl	NA	NA	NA
Pentabromobiphenyl	NA	NA	NA
Hexabromobiphenyl	NA	NA	NA
Heptabromobiphenyl	NA	NA	NA
Octabromobiphenyl	NA	NA	NA
Nonabromobiphenyl	NA	NA	NA
Decabromobiphenyl	NA	NA	NA
Sum of PBDEs	NA	NA	NA
Monobromodiphenyl ether	NA	NA	NA
Dibromodiphenyl ether	NA	NA	NA
Tribromodiphenyl ether	NA	NA	NA
Tetrabromodiphenyl ether	NA	NA	NA
Pentabromodiphenyl ether	NA	NA	NA
Hexabromodiphenyl ether	NA	NA	NA
Heptabromodiphenyl ether	NA	NA	NA
Octabromodiphenyl ether	NA	NA	NA
Nonabromodiphenyl ether	NA	NA	NA
Decabromodiphenyl ether	NA	NA	NA
Phthalates	NA	NA	NA
Dibutyl phthalate (DBP)	NA	NA	NA
Butyl benzyl phthalate (BBP)	NA	NA	NA
Bis (2-ethylhexyl) phthalate (DEHP)	NA	NA	NA
Diisobutyl Phthalates (DIBP)	NA	NA	NA

Remarks:	ppm = Parts per million based on dry weight of sample (1 mg/kg = 0.0001%)		
	$\mu\text{g}/\text{cm}^2$ = Microgram per square centimeter		
	mg/kg with 50 cm ² = Milligram per kilogram with 50 square centimetre		
	ND = Not detected (<MDL)	NA = Not applicable	NR = Not requested
	MDL = Method Detection Limit		

TEST REPORT

Job No./Report No TR2524633-RV1

Date: 28 August 2024

Page 57 of 104

Test Item(s):	RESULTS		
	8.10	8.11	8.12
Cadmium (Cd)	ND	ND	ND
Lead (Pb)	ND	ND	ND
Mercury (Hg)	ND	ND	ND
Hexavalent Chromium (Cr(VI)) (ppm) (for non metal)	NA	ND	ND
Hexavalent Chromium (Cr(VI)) ($\mu\text{g}/\text{cm}^2$) (for metal)	ND	NA	NA
Flame Retardants			
Sum of PBBs	NA	ND	ND
Monobromobiphenyl	NA	ND	ND
Dibromobiphenyl	NA	ND	ND
Tribromobiphenyl	NA	ND	ND
Tetrabromobiphenyl	NA	ND	ND
Pentabromobiphenyl	NA	ND	ND
Hexabromobiphenyl	NA	ND	ND
Heptabromobiphenyl	NA	ND	ND
Octabromobiphenyl	NA	ND	ND
Nonabromobiphenyl	NA	ND	ND
Decabromobiphenyl	NA	ND	ND
Sum of PBDEs	NA	ND	ND
Monobromodiphenyl ether	NA	ND	ND
Dibromodiphenyl ether	NA	ND	ND
Tribromodiphenyl ether	NA	ND	ND
Tetrabromodiphenyl ether	NA	ND	ND
Pentabromodiphenyl ether	NA	ND	ND
Hexabromodiphenyl ether	NA	ND	ND
Heptabromodiphenyl ether	NA	ND	ND
Octabromodiphenyl ether	NA	ND	ND
Nonabromodiphenyl ether	NA	ND	ND
Decabromodiphenyl ether	NA	ND	ND
Phthalates	NA	ND	ND
Dibutyl phthalate (DBP)	NA	ND	ND
Butyl benzyl phthalate (BBP)	NA	ND	ND
Bis (2-ethylhexyl) phthalate (DEHP)	NA	ND	ND
Diisobutyl Phthalates (DIBP)	NA	ND	ND

Remarks:	ppm = Parts per million based on dry weight of sample (1 mg/kg = 0.0001%)		
	$\mu\text{g}/\text{cm}^2$ = Microgram per square centimeter		
	mg/kg with 50 cm ² = Milligram per kilogram with 50 square centimetre		
	ND = Not detected (<MDL)	NA = Not applicable	NR = Not requested
	MDL = Method Detection Limit		

TEST REPORT

Job No./Report No TR2524633-RV1

Date: 28 August 2024

Page 58 of 104

Test Item(s):	RESULTS		
	8.13	8.14	8.15
Cadmium (Cd)	ND	ND	ND
Lead (Pb)	ND	ND	ND
Mercury (Hg)	ND	ND	ND
Hexavalent Chromium (Cr(VI)) (ppm) (for non metal)	ND	ND	ND
Hexavalent Chromium (Cr(VI)) ($\mu\text{g}/\text{cm}^2$) (for metal)	NA	NA	NA
Flame Retardants			
Sum of PBBs	ND	ND	ND
Monobromobiphenyl	ND	ND	ND
Dibromobiphenyl	ND	ND	ND
Tribromobiphenyl	ND	ND	ND
Tetrabromobiphenyl	ND	ND	ND
Pentabromobiphenyl	ND	ND	ND
Hexabromobiphenyl	ND	ND	ND
Heptabromobiphenyl	ND	ND	ND
Octabromobiphenyl	ND	ND	ND
Nonabromobiphenyl	ND	ND	ND
Decabromobiphenyl	ND	ND	ND
Sum of PBDEs	ND	ND	ND
Monobromodiphenyl ether	ND	ND	ND
Dibromodiphenyl ether	ND	ND	ND
Tribromodiphenyl ether	ND	ND	ND
Tetrabromodiphenyl ether	ND	ND	ND
Pentabromodiphenyl ether	ND	ND	ND
Hexabromodiphenyl ether	ND	ND	ND
Heptabromodiphenyl ether	ND	ND	ND
Octabromodiphenyl ether	ND	ND	ND
Nonabromodiphenyl ether	ND	ND	ND
Decabromodiphenyl ether	ND	ND	ND
Phthalates	ND	ND	ND
Dibutyl phthalate (DBP)	ND	ND	ND
Butyl benzyl phthalate (BBP)	ND	ND	ND
Bis (2-ethylhexyl) phthalate (DEHP)	ND	ND	ND
Diisobutyl Phthalates (DIBP)	ND	ND	ND

Remarks:	ppm = Parts per million based on dry weight of sample (1 mg/kg = 0.0001%)		
	$\mu\text{g}/\text{cm}^2$ = Microgram per square centimeter		
	mg/kg with 50 cm^2 = Milligram per kilogram with 50 square centimetre		
	ND = Not detected (<MDL)	NA = Not applicable	NR = Not requested
	MDL = Method Detection Limit		

TEST REPORT

Job No./Report No TR2524633-RV1

Date: 28 August 2024

Page 59 of 104

<u>Test Item(s):</u>	<u>RESULTS</u>		
	<u>8.16</u>	<u>8.17</u>	<u>8.18</u>
Cadmium (Cd)	ND	ND	ND
Lead (Pb)	ND	ND	ND
Mercury (Hg)	ND	ND	ND
Hexavalent Chromium (Cr(VI)) (ppm) (for non metal)	NA	NA	NA
Hexavalent Chromium (Cr(VI)) (µg/cm ²) (for metal)	ND	ND	ND
Flame Retardants			
Sum of PBBs	NA	NA	NA
Monobromobiphenyl	NA	NA	NA
Dibromobiphenyl	NA	NA	NA
Tribromobiphenyl	NA	NA	NA
Tetrabromobiphenyl	NA	NA	NA
Pentabromobiphenyl	NA	NA	NA
Hexabromobiphenyl	NA	NA	NA
Heptabromobiphenyl	NA	NA	NA
Octabromobiphenyl	NA	NA	NA
Nonabromobiphenyl	NA	NA	NA
Decabromobiphenyl	NA	NA	NA
Sum of PBDEs	NA	NA	NA
Monobromodiphenyl ether	NA	NA	NA
Dibromodiphenyl ether	NA	NA	NA
Tribromodiphenyl ether	NA	NA	NA
Tetrabromodiphenyl ether	NA	NA	NA
Pentabromodiphenyl ether	NA	NA	NA
Hexabromodiphenyl ether	NA	NA	NA
Heptabromodiphenyl ether	NA	NA	NA
Octabromodiphenyl ether	NA	NA	NA
Nonabromodiphenyl ether	NA	NA	NA
Decabromodiphenyl ether	NA	NA	NA
Phthalates	NA	NA	NA
Dibutyl phthalate (DBP)	NA	NA	NA
Butyl benzyl phthalate (BBP)	NA	NA	NA
Bis (2-ethylhexyl) phthalate (DEHP)	NA	NA	NA
Diisobutyl Phthalates (DIBP)	NA	NA	NA

Remarks:	ppm = Parts per million based on dry weight of sample (1 mg/kg = 0.0001%)		
	µg/cm ² = Microgram per square centimeter		
	mg/kg with 50 cm ² = Milligram per kilogram with 50 square centimetre		
	ND = Not detected (<MDL)	NA = Not applicable	NR = Not requested
	MDL = Method Detection Limit		

TEST REPORT

Job No./Report No TR2524633-RV1

Date: 28 August 2024

Page 60 of 104

Test Item(s):	RESULTS		
	8.19	8.20	8.21
Cadmium (Cd)	ND	ND	ND
Lead (Pb)	ND	ND	ND
Mercury (Hg)	ND	ND	ND
Hexavalent Chromium (Cr(VI)) (ppm) (for non metal)	NA	NA	ND
Hexavalent Chromium (Cr(VI)) (µg/cm ²) (for metal)	ND	ND	NA
Flame Retardants			
Sum of PBBs	NA	NA	ND
Monobromobiphenyl	NA	NA	ND
Dibromobiphenyl	NA	NA	ND
Tribromobiphenyl	NA	NA	ND
Tetrabromobiphenyl	NA	NA	ND
Pentabromobiphenyl	NA	NA	ND
Hexabromobiphenyl	NA	NA	ND
Heptabromobiphenyl	NA	NA	ND
Octabromobiphenyl	NA	NA	ND
Nonabromobiphenyl	NA	NA	ND
Decabromobiphenyl	NA	NA	ND
Sum of PBDEs	NA	NA	ND
Monobromodiphenyl ether	NA	NA	ND
Dibromodiphenyl ether	NA	NA	ND
Tribromodiphenyl ether	NA	NA	ND
Tetrabromodiphenyl ether	NA	NA	ND
Pentabromodiphenyl ether	NA	NA	ND
Hexabromodiphenyl ether	NA	NA	ND
Heptabromodiphenyl ether	NA	NA	ND
Octabromodiphenyl ether	NA	NA	ND
Nonabromodiphenyl ether	NA	NA	ND
Decabromodiphenyl ether	NA	NA	ND
Phthalates	NA	NA	ND
Dibutyl phthalate (DBP)	NA	NA	ND
Butyl benzyl phthalate (BBP)	NA	NA	ND
Bis (2-ethylhexyl) phthalate (DEHP)	NA	NA	ND
Diisobutyl Phthalates (DIBP)	NA	NA	ND

Remarks:	ppm = Parts per million based on dry weight of sample (1 mg/kg = 0.0001%)		
	µg/cm ² = Microgram per square centimeter		
	mg/kg with 50 cm ² = Milligram per kilogram with 50 square centimetre		
	ND = Not detected (<MDL)	NA = Not applicable	NR = Not requested
	MDL = Method Detection Limit		

TEST REPORT

Job No./Report No TR2524633-RV1

Date: 28 August 2024

Page 61 of 104

Test Item(s):	RESULTS		
	8.22	8.23	8.24
Cadmium (Cd)	ND	ND	ND
Lead (Pb)	ND	ND	ND
Mercury (Hg)	ND	ND	ND
Hexavalent Chromium (Cr(VI)) (ppm) (for non metal)	NA	NA	NA
Hexavalent Chromium (Cr(VI)) (µg/cm ²) (for metal)	ND	ND	ND
Flame Retardants			
Sum of PBBs	NA	NA	NA
Monobromobiphenyl	NA	NA	NA
Dibromobiphenyl	NA	NA	NA
Tribromobiphenyl	NA	NA	NA
Tetrabromobiphenyl	NA	NA	NA
Pentabromobiphenyl	NA	NA	NA
Hexabromobiphenyl	NA	NA	NA
Heptabromobiphenyl	NA	NA	NA
Octabromobiphenyl	NA	NA	NA
Nonabromobiphenyl	NA	NA	NA
Decabromobiphenyl	NA	NA	NA
Sum of PBDEs	NA	NA	NA
Monobromodiphenyl ether	NA	NA	NA
Dibromodiphenyl ether	NA	NA	NA
Tribromodiphenyl ether	NA	NA	NA
Tetrabromodiphenyl ether	NA	NA	NA
Pentabromodiphenyl ether	NA	NA	NA
Hexabromodiphenyl ether	NA	NA	NA
Heptabromodiphenyl ether	NA	NA	NA
Octabromodiphenyl ether	NA	NA	NA
Nonabromodiphenyl ether	NA	NA	NA
Decabromodiphenyl ether	NA	NA	NA
Phthalates	NA	NA	NA
Dibutyl phthalate (DBP)	NA	NA	NA
Butyl benzyl phthalate (BBP)	NA	NA	NA
Bis (2-ethylhexyl) phthalate (DEHP)	NA	NA	NA
Diisobutyl Phthalates (DIBP)	NA	NA	NA

Remarks:	ppm = Parts per million based on dry weight of sample (1 mg/kg = 0.0001%)		
	µg/cm ² = Microgram per square centimeter		
	mg/kg with 50 cm ² = Milligram per kilogram with 50 square centimetre		
	ND = Not detected (<MDL)	NA = Not applicable	NR = Not requested
	MDL = Method Detection Limit		

TEST REPORT

Job No./Report No TR2524633-RV1

Date: 28 August 2024

Page 62 of 104

Test Item(s):	RESULTS		
	8.25	8.26	8.27
Cadmium (Cd)	ND	ND	ND
Lead (Pb)	ND	ND	ND
Mercury (Hg)	ND	ND	ND
Hexavalent Chromium (Cr(VI)) (ppm) (for non metal)	NA	NA	ND
Hexavalent Chromium (Cr(VI)) (µg/cm ²) (for metal)	ND	ND	NA
Flame Retardants			
Sum of PBBs	NA	NA	ND
Monobromobiphenyl	NA	NA	ND
Dibromobiphenyl	NA	NA	ND
Tribromobiphenyl	NA	NA	ND
Tetrabromobiphenyl	NA	NA	ND
Pentabromobiphenyl	NA	NA	ND
Hexabromobiphenyl	NA	NA	ND
Heptabromobiphenyl	NA	NA	ND
Octabromobiphenyl	NA	NA	ND
Nonabromobiphenyl	NA	NA	ND
Decabromobiphenyl	NA	NA	ND
Sum of PBDEs	NA	NA	ND
Monobromodiphenyl ether	NA	NA	ND
Dibromodiphenyl ether	NA	NA	ND
Tribromodiphenyl ether	NA	NA	ND
Tetrabromodiphenyl ether	NA	NA	ND
Pentabromodiphenyl ether	NA	NA	ND
Hexabromodiphenyl ether	NA	NA	ND
Heptabromodiphenyl ether	NA	NA	ND
Octabromodiphenyl ether	NA	NA	ND
Nonabromodiphenyl ether	NA	NA	ND
Decabromodiphenyl ether	NA	NA	ND
Phthalates	NA	NA	ND
Dibutyl phthalate (DBP)	NA	NA	ND
Butyl benzyl phthalate (BBP)	NA	NA	ND
Bis (2-ethylhexyl) phthalate (DEHP)	NA	NA	ND
Diisobutyl Phthalates (DIBP)	NA	NA	ND

Remarks:	ppm = Parts per million based on dry weight of sample (1 mg/kg = 0.0001%)		
	µg/cm ² = Microgram per square centimeter		
	mg/kg with 50 cm ² = Milligram per kilogram with 50 square centimetre		
	ND = Not detected (<MDL)	NA = Not applicable	NR = Not requested
	MDL = Method Detection Limit		

TEST REPORT

Job No./Report No TR2524633-RV1

Date: 28 August 2024

Page 63 of 104

Test Item(s):	RESULTS		
	8.28	8.29	8.30
Cadmium (Cd)	ND	ND	ND
Lead (Pb)	ND	ND	ND
Mercury (Hg)	ND	ND	ND
Hexavalent Chromium (Cr(VI)) (ppm) (for non metal)	ND	NA	ND
Hexavalent Chromium (Cr(VI)) ($\mu\text{g}/\text{cm}^2$) (for metal)	NA	ND	NA
Flame Retardants			
Sum of PBBs	ND	NA	ND
Monobromobiphenyl	ND	NA	ND
Dibromobiphenyl	ND	NA	ND
Tribromobiphenyl	ND	NA	ND
Tetrabromobiphenyl	ND	NA	ND
Pentabromobiphenyl	ND	NA	ND
Hexabromobiphenyl	ND	NA	ND
Heptabromobiphenyl	ND	NA	ND
Octabromobiphenyl	ND	NA	ND
Nonabromobiphenyl	ND	NA	ND
Decabromobiphenyl	ND	NA	ND
Sum of PBDEs	ND	NA	ND
Monobromodiphenyl ether	ND	NA	ND
Dibromodiphenyl ether	ND	NA	ND
Tribromodiphenyl ether	ND	NA	ND
Tetrabromodiphenyl ether	ND	NA	ND
Pentabromodiphenyl ether	ND	NA	ND
Hexabromodiphenyl ether	ND	NA	ND
Heptabromodiphenyl ether	ND	NA	ND
Octabromodiphenyl ether	ND	NA	ND
Nonabromodiphenyl ether	ND	NA	ND
Decabromodiphenyl ether	ND	NA	ND
Phthalates	ND	NA	NA
Dibutyl phthalate (DBP)	ND	NA	NA
Butyl benzyl phthalate (BBP)	ND	NA	NA
Bis (2-ethylhexyl) phthalate (DEHP)	ND	NA	NA
Diisobutyl Phthalates (DIBP)	ND	NA	NA

Remarks:	ppm = Parts per million based on dry weight of sample (1 mg/kg = 0.0001%)		
	$\mu\text{g}/\text{cm}^2$ = Microgram per square centimeter		
	mg/kg with 50 cm ² = Milligram per kilogram with 50 square centimetre		
	ND = Not detected (<MDL)	NA = Not applicable	NR = Not requested
	MDL = Method Detection Limit		

TEST REPORT

Job No./Report No TR2524633-RV1

Date: 28 August 2024

Page 64 of 104

<u>Test Item(s):</u>	<u>RESULTS</u>		
	<u>8.31</u>	<u>8.32</u>	<u>8.33</u>
Cadmium (Cd)	ND	ND	ND
Lead (Pb)	ND	ND	ND
Mercury (Hg)	ND	ND	ND
Hexavalent Chromium (Cr(VI)) (ppm) (for non metal)	ND	ND	ND
Hexavalent Chromium (Cr(VI)) (µg/cm ²) (for metal)	NA	NA	NA
Flame Retardants			
Sum of PBBs	ND	ND	ND
Monobromobiphenyl	ND	ND	ND
Dibromobiphenyl	ND	ND	ND
Tribromobiphenyl	ND	ND	ND
Tetrabromobiphenyl	ND	ND	ND
Pentabromobiphenyl	ND	ND	ND
Hexabromobiphenyl	ND	ND	ND
Heptabromobiphenyl	ND	ND	ND
Octabromobiphenyl	ND	ND	ND
Nonabromobiphenyl	ND	ND	ND
Decabromobiphenyl	ND	ND	ND
Sum of PBDEs	ND	ND	ND
Monobromodiphenyl ether	ND	ND	ND
Dibromodiphenyl ether	ND	ND	ND
Tribromodiphenyl ether	ND	ND	ND
Tetrabromodiphenyl ether	ND	ND	ND
Pentabromodiphenyl ether	ND	ND	ND
Hexabromodiphenyl ether	ND	ND	ND
Heptabromodiphenyl ether	ND	ND	ND
Octabromodiphenyl ether	ND	ND	ND
Nonabromodiphenyl ether	ND	ND	ND
Decabromodiphenyl ether	ND	ND	ND
Phthalates	NA	NA	NA
Dibutyl phthalate (DBP)	NA	NA	NA
Butyl benzyl phthalate (BBP)	NA	NA	NA
Bis (2-ethylhexyl) phthalate (DEHP)	NA	NA	NA
Diisobutyl Phthalates (DIBP)	NA	NA	NA

Remarks:	ppm = Parts per million based on dry weight of sample (1 mg/kg = 0.0001%)		
	µg/cm ² = Microgram per square centimeter		
	mg/kg with 50 cm ² = Milligram per kilogram with 50 square centimetre		
	ND = Not detected (<MDL)	NA = Not applicable	NR = Not requested
	MDL = Method Detection Limit		

TEST REPORT

Job No./Report No TR2524633-RV1

Date: 28 August 2024

Page 65 of 104

Test Item(s):	RESULTS		
	8.34	8.35	8.36
Cadmium (Cd)	ND	ND	ND
Lead (Pb)	ND	ND	ND
Mercury (Hg)	ND	ND	ND
Hexavalent Chromium (Cr(VI)) (ppm) (for non metal)	ND	NA	ND
Hexavalent Chromium (Cr(VI)) (µg/cm ²) (for metal)	NA	ND	NA
Flame Retardants			
Sum of PBBs	ND	NA	ND
Monobromobiphenyl	ND	NA	ND
Dibromobiphenyl	ND	NA	ND
Tribromobiphenyl	ND	NA	ND
Tetrabromobiphenyl	ND	NA	ND
Pentabromobiphenyl	ND	NA	ND
Hexabromobiphenyl	ND	NA	ND
Heptabromobiphenyl	ND	NA	ND
Octabromobiphenyl	ND	NA	ND
Nonabromobiphenyl	ND	NA	ND
Decabromobiphenyl	ND	NA	ND
Sum of PBDEs	ND	NA	ND
Monobromodiphenyl ether	ND	NA	ND
Dibromodiphenyl ether	ND	NA	ND
Tribromodiphenyl ether	ND	NA	ND
Tetrabromodiphenyl ether	ND	NA	ND
Pentabromodiphenyl ether	ND	NA	ND
Hexabromodiphenyl ether	ND	NA	ND
Heptabromodiphenyl ether	ND	NA	ND
Octabromodiphenyl ether	ND	NA	ND
Nonabromodiphenyl ether	ND	NA	ND
Decabromodiphenyl ether	ND	NA	ND
Phthalates	ND	NA	ND
Dibutyl phthalate (DBP)	ND	NA	ND
Butyl benzyl phthalate (BBP)	ND	NA	ND
Bis (2-ethylhexyl) phthalate (DEHP)	ND	NA	ND
Diisobutyl Phthalates (DIBP)	ND	NA	ND

Remarks:	ppm = Parts per million based on dry weight of sample (1 mg/kg = 0.0001%)		
	µg/cm ² = Microgram per square centimeter		
	mg/kg with 50 cm ² = Milligram per kilogram with 50 square centimetre		
	ND = Not detected (<MDL)	NA = Not applicable	NR = Not requested
	MDL = Method Detection Limit		

TEST REPORT

Job No./Report No TR2524633-RV1

Date: 28 August 2024

Page 66 of 104

Test Item(s):	RESULTS		
	8.37	8.38	8.39
Cadmium (Cd)	ND	ND	ND
Lead (Pb)	ND	ND	ND
Mercury (Hg)	ND	ND	ND
Hexavalent Chromium (Cr(VI)) (ppm) (for non metal)	ND	NA	NA
Hexavalent Chromium (Cr(VI)) ($\mu\text{g}/\text{cm}^2$) (for metal)	NA	ND	ND
Flame Retardants			
Sum of PBBs	ND	NA	NA
Monobromobiphenyl	ND	NA	NA
Dibromobiphenyl	ND	NA	NA
Tribromobiphenyl	ND	NA	NA
Tetrabromobiphenyl	ND	NA	NA
Pentabromobiphenyl	ND	NA	NA
Hexabromobiphenyl	ND	NA	NA
Heptabromobiphenyl	ND	NA	NA
Octabromobiphenyl	ND	NA	NA
Nonabromobiphenyl	ND	NA	NA
Decabromobiphenyl	ND	NA	NA
Sum of PBDEs	ND	NA	NA
Monobromodiphenyl ether	ND	NA	NA
Dibromodiphenyl ether	ND	NA	NA
Tribromodiphenyl ether	ND	NA	NA
Tetrabromodiphenyl ether	ND	NA	NA
Pentabromodiphenyl ether	ND	NA	NA
Hexabromodiphenyl ether	ND	NA	NA
Heptabromodiphenyl ether	ND	NA	NA
Octabromodiphenyl ether	ND	NA	NA
Nonabromodiphenyl ether	ND	NA	NA
Decabromodiphenyl ether	ND	NA	NA
Phthalates	ND	NA	NA
Dibutyl phthalate (DBP)	ND	NA	NA
Butyl benzyl phthalate (BBP)	ND	NA	NA
Bis (2-ethylhexyl) phthalate (DEHP)	ND	NA	NA
Diisobutyl Phthalates (DIBP)	ND	NA	NA

Remarks:	ppm = Parts per million based on dry weight of sample (1 mg/kg = 0.0001%)		
	$\mu\text{g}/\text{cm}^2$ = Microgram per square centimeter		
	mg/kg with 50 cm ² = Milligram per kilogram with 50 square centimetre		
	ND = Not detected (<MDL)	NA = Not applicable	NR = Not requested
	MDL = Method Detection Limit		

TEST REPORT

Job No./Report No TR2524633-RV1

Date: 28 August 2024

Page 67 of 104

SUBSTANCE	LIMITS
Cadmium (Cd)Content	0.01 % (100 ppm)
Lead (Pb) Content	0.1 % (1000 ppm)
Mercury (Hg) Content	0.1 % (1000 ppm)
Chromium VI (Cr+6)Content(ppm)(for non metal)	0.1 % (1000 ppm)
Chromium VI (Cr+6)Content($\mu\text{g}/\text{cm}^2$)for metal)	Colorimetric result $< 0.10 \mu\text{g}/\text{cm}^2$ $\geq 0.10 \mu\text{g}/\text{cm}^2$ and $\leq 0.13 \mu\text{g}/\text{cm}^2$ $> 0.13 \mu\text{g}/\text{cm}^2$
	Qualitative Result Negative Inconclusive Positive
PBB	0.1 % (1000 ppm)
PBBDE	0.1 % (1000 ppm)
Dibutyl Phthalate (DBP)	0.1 % (1000 ppm)
Benzyl Butyl Phthalate (BBP)	0.1 % (1000 ppm)
Diethyl Hexyl Phthalate (DEHP)	0.1 % (1000 ppm)
Diisobutyl Phthalate (DIBP)	0.1 % (1000 ppm)

Testing Item	Testing Method	MDL
Cadmium (Cd)Content	With reference to IEC 62321-5:2013, determination of Cadmium by ICP-MS/ICP-OES. ¹	2 ppm
Lead (Pb)Content	With reference to IEC 62321-5:2013, determination of Lead by ICP-MS/ICP-OES. ¹	2 ppm
Mercury (Hg)Content	With reference to IEC 62321-4:2013+A1:2017, determination of Mercury by ICP-MS/ICP-OES. ¹	2 ppm
Chromium VI (Cr6+) (For non-metal)	With reference to IEC 62321-7-2:2017, determination of Hexavalent Chromium by Colorimetric Method using UV-Vis. ¹	8 ppm
Chromium VI (Cr6+) (For metal)	With reference to IEC 62321-7-1:2015, determination of Hexavalent Chromium by Colorimetric Method using UV-Vis. ¹	0.1 $\mu\text{g}/\text{cm}^2$ with 50 cm^2 (IN TESTING SOLUTION)
PBBs/PBDEs	With reference to IEC 62321-6:2015, determination of PBBs and PBDEs by GC-MS. ¹	5 ppm
Phthalates	With reference to IEC 62321-8:2017, determination of phthalates by GC-MS. ¹	50 ppm



AB-0690-T
TR2524633-RV1
08-24

TEST REPORT

Job No./Report No TR2524633-RV1

Date: 28 August 2024

Page 68 of 104

Notes:

- (1) The maximum permissible limit is quoted from RoHS Directive (EU) 2015/863. IEC 62321 series is equivalent to EN 62321 series
http://www.cenelec.eu/dyn/www/f?p=104:30:1742232870351101:::FSP_ORG_ID,FSP_LANG_ID:1258637,25
- (2) On 4 June 2015, [Commission Directive \(EU\) 2015/863](#) was published in the Official Journal of the European Union (OJEU) to include the phthalates BBP, DBP, DEHP and DIBP into ANNEX II of the Rohs Recast Directive. The new law restricts each phthalate to no more than 0.1% in each homogeneous material of an electrical product.
- (3) The restriction of DEHP, BBP, DBP and DIBP shall apply to medical devices, including in vitro medical devices, and monitoring and control instruments, including industrial monitoring and control instruments, from 22 July 2021.
- (4) The restriction of DEHP, BBP, DBP and DIBP shall not apply to cables or spare parts for the repair, the reuse, the updating of functionalities or upgrading of capacity of EEE placed on the market before 22 July 2019, and of medical devices, including in vitro medical devices, and monitoring and control instruments, including industrial monitoring and control instruments, placed on the market before 22 July 2021.
- (5) The restriction of DEHP, BBP and DBP shall not apply to toys which are already subject to the restriction of DEHP, BBP and DBP through entry 51 of Annex XVII to Regulation (EC) No 1907/2006.

TEST REPORT

Job No./Report No TR2524633-RV1

Date: 28 August 2024

Page 69 of 104

1



TEST REPORT

Job No./Report No TR2524633-RV1

Date: 28 August 2024

Page 70 of 104

1.1



1.2



1.3



1.4



1.5



1.6



TEST REPORT

Job No./Report No TR2524633-RV1

Date: 28 August 2024

Page 71 of 104

1.7



1.8



1.9



1.10



1.11



1.12



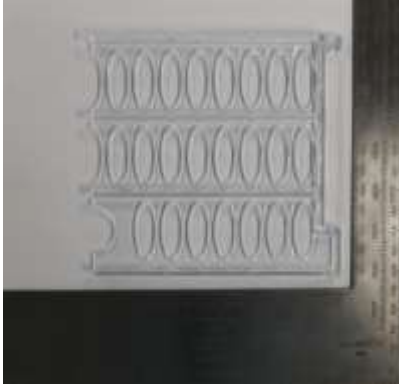
TEST REPORT

Job No./Report No TR2524633-RV1

Date: 28 August 2024

Page 72 of 104

1.13



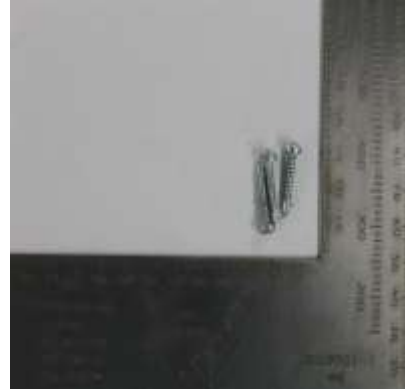
1.14



1.15



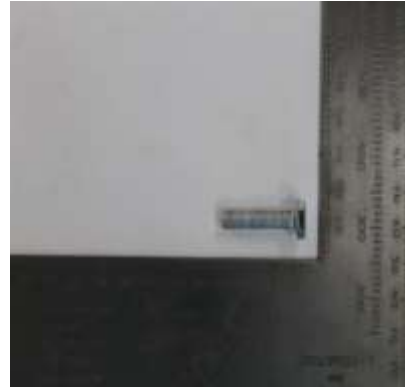
1.16



1.17



1.18



TEST REPORT

Job No./Report No TR2524633-RV1

Date: 28 August 2024

Page 73 of 104

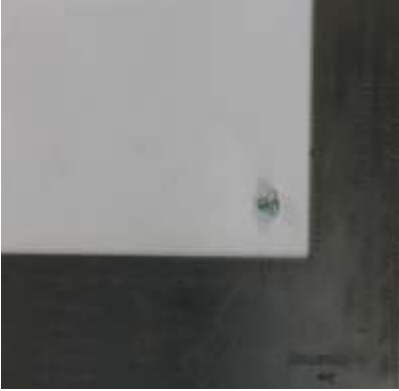
1.19



1.20



1.21



1.22



1.23



1.24



TEST REPORT

Job No./Report No TR2524633-RV1

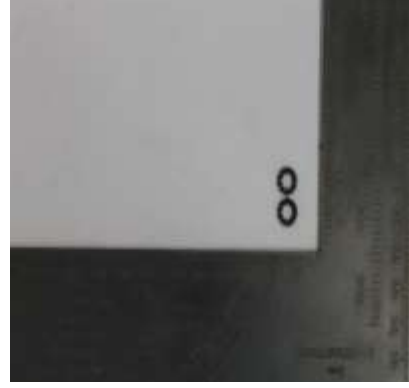
Date: 28 August 2024

Page 74 of 104

1.25



1.26



TEST REPORT

Job No./Report No TR2524633-RV1

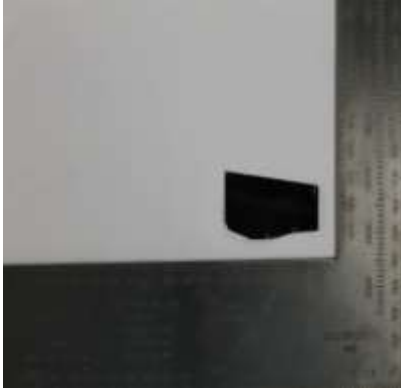
Date: 28 August 2024

Page 75 of 104

2



2.1



2.2



2.3



2.4



TEST REPORT

Job No./Report No TR2524633-RV1

Date: 28 August 2024

Page 76 of 104

2.5



2.6



2.7



TEST REPORT

Job No./Report No TR2524633-RV1

Date: 28 August 2024

Page 77 of 104

3



3.1



3.2



3.3



3.4



TEST REPORT

Job No./Report No TR2524633-RV1

Date: 28 August 2024

Page 78 of 104

3.5



3.6



3.7



TEST REPORT

Job No./Report No TR2524633-RV1

Date: 28 August 2024

Page 79 of 104

4



4.1



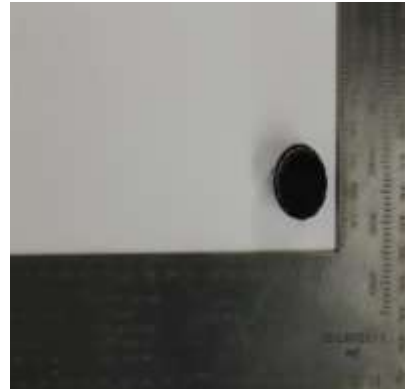
4.2



4.3



4.4



TEST REPORT

Job No./Report No TR2524633-RV1

Date: 28 August 2024

Page 80 of 104

4.5



4.6



4.7



4.8



4.9



4.10



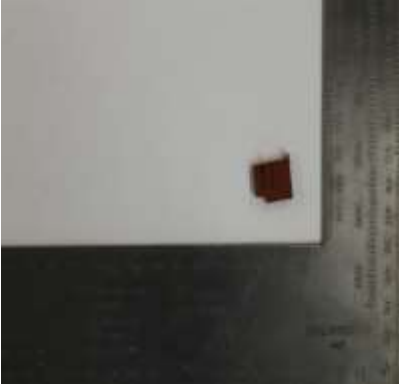
TEST REPORT

Job No./Report No TR2524633-RV1

Date: 28 August 2024

Page 81 of 104

4.11



4.12



4.13



4.14



4.15



4.16



TEST REPORT

Job No./Report No TR2524633-RV1

Date: 28 August 2024

Page 82 of 104

4.17



TEST REPORT

Job No./Report No TR2524633-RV1

Date: 28 August 2024

Page 83 of 104

5



5.1



5.2



5.3



5.4



TEST REPORT

Job No./Report No TR2524633-RV1

Date: 28 August 2024

Page 84 of 104

5.5



5.6



5.7



5.8



5.9



TEST REPORT

Job No./Report No TR2524633-RV1

Date: 28 August 2024

Page 85 of 104

6



6.1



6.2



6.3



6.4



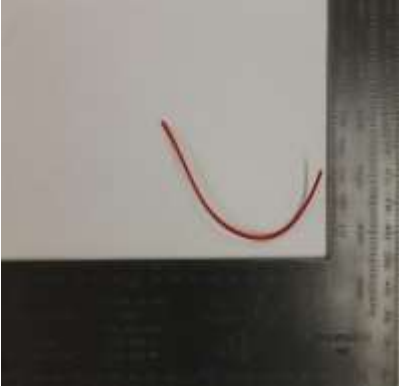
TEST REPORT

Job No./Report No TR2524633-RV1

Date: 28 August 2024

Page 86 of 104

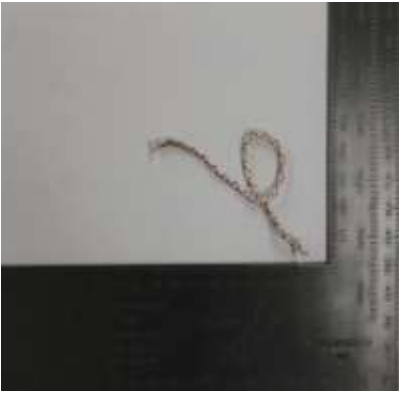
6.5



6.6



6.7



6.8



6.9



6.10



TEST REPORT

Job No./Report No TR2524633-RV1

Date: 28 August 2024

Page 87 of 104

6.11



6.12



6.13



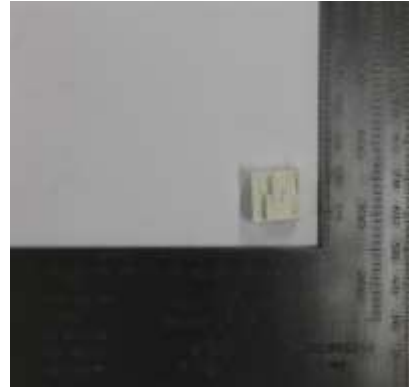
6.14



6.15



6.16



TEST REPORT

Job No./Report No TR2524633-RV1

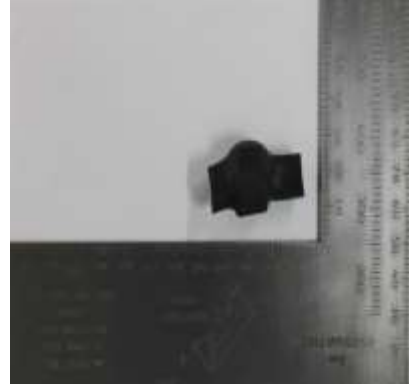
Date: 28 August 2024

Page 88 of 104

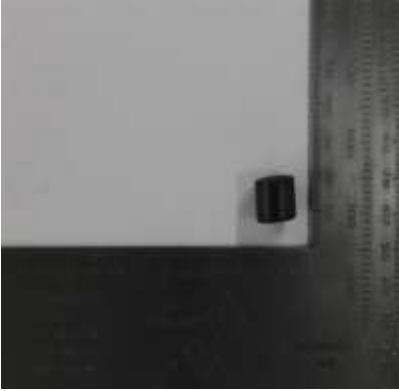
6.17



6.18



6.19



6.20



6.21



6.22



TEST REPORT

Job No./Report No TR2524633-RV1

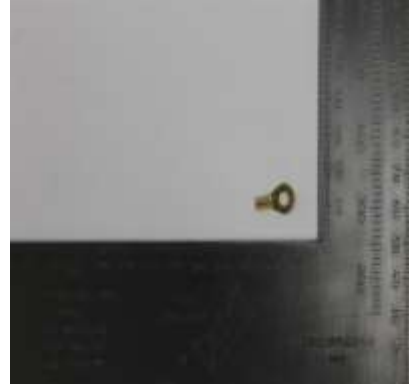
Date: 28 August 2024

Page 89 of 104

6.23



6.24



6.25



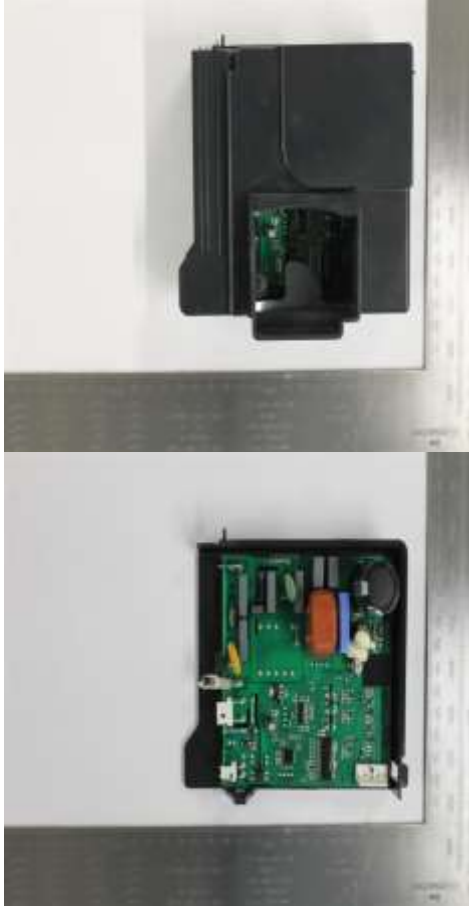
TEST REPORT

Job No./Report No TR2524633-RV1

Date: 28 August 2024

Page 90 of 104

7



TEST REPORT

Job No./Report No TR2524633-RV1

Date: 28 August 2024

Page 91 of 104

7.1



7.2



7.3



7.4



7.5



7.6



TEST REPORT

Job No./Report No TR2524633-RV1

Date: 28 August 2024

Page 92 of 104

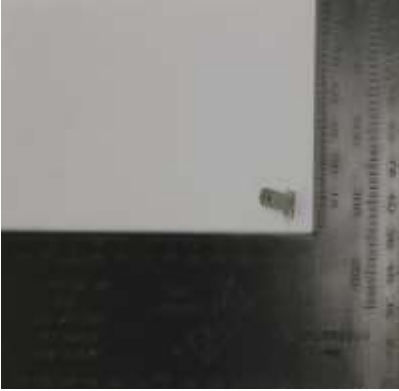
7.7



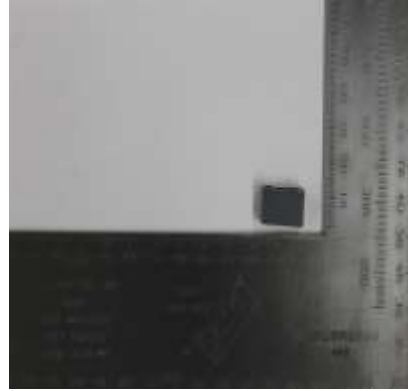
7.8



7.9



7.10



7.11



7.12



TEST REPORT

Job No./Report No TR2524633-RV1

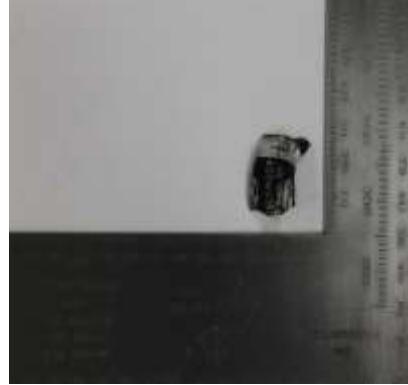
Date: 28 August 2024

Page 93 of 104

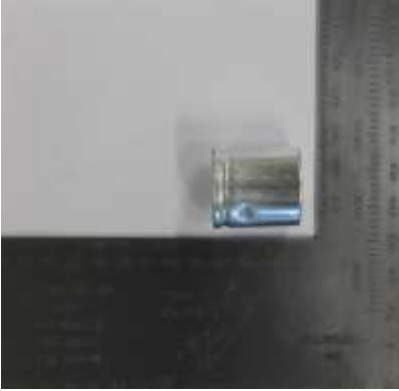
7.13



7.14



7.15



7.16



7.17



7.18



TEST REPORT

Job No./Report No TR2524633-RV1

Date: 28 August 2024

Page 94 of 104

7.19



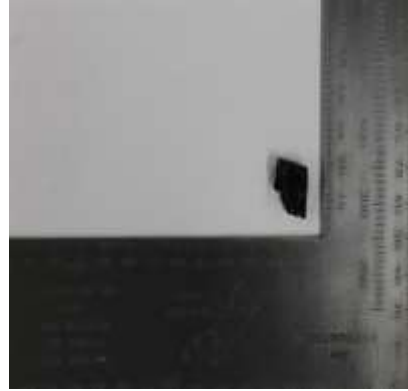
7.20



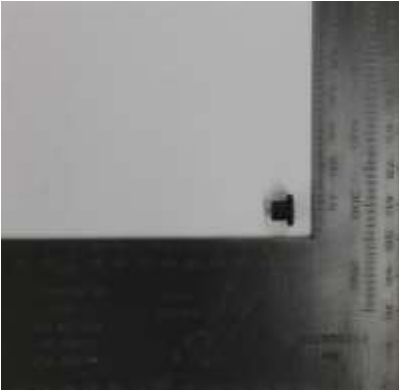
7.21



7.22



7.23



7.24



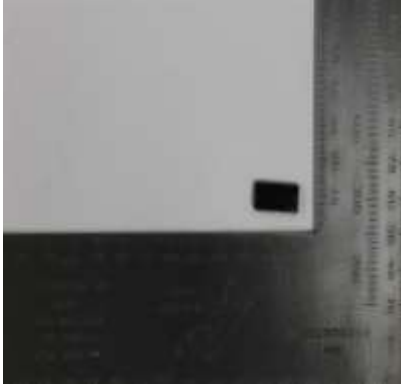
TEST REPORT

Job No./Report No TR2524633-RV1

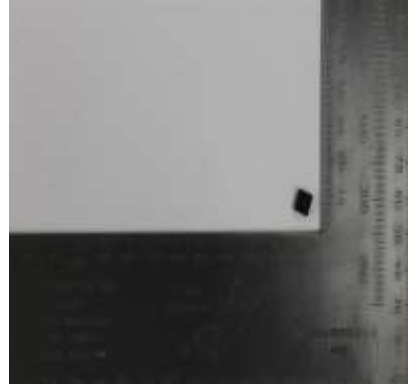
Date: 28 August 2024

Page 95 of 104

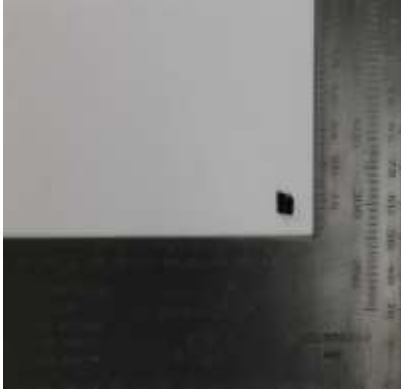
7.25



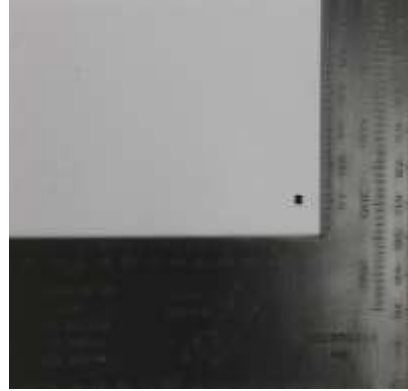
7.26



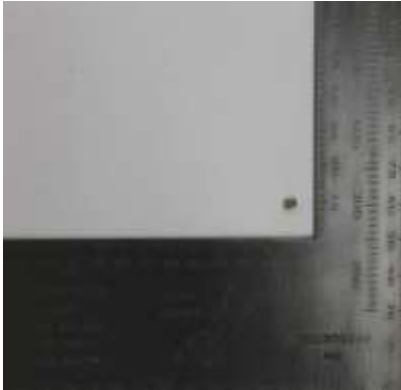
7.27



7.28



7.29



7.30



TEST REPORT

Job No./Report No TR2524633-RV1

Date: 28 August 2024

Page 96 of 104

7.31



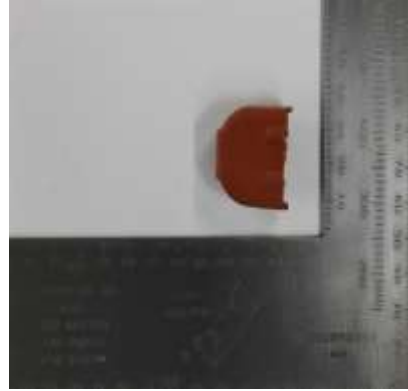
7.33



7.34



7.35



7.36



7.37



TEST REPORT

Job No./Report No TR2524633-RV1

Date: 28 August 2024

Page 97 of 104

8



TEST REPORT

Job No./Report No TR2524633-RV1

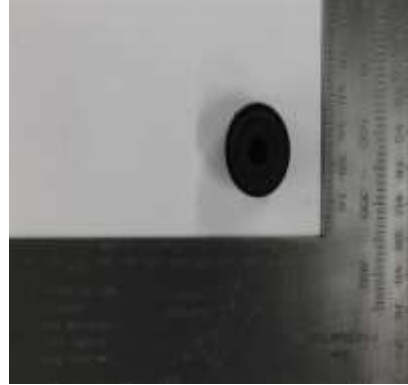
Date: 28 August 2024

Page 98 of 104

8.1



8.2



8.3



8.4



8.5



8.6



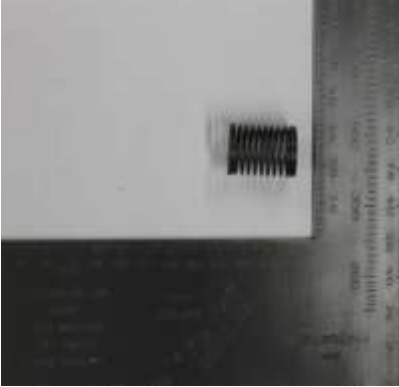
TEST REPORT

Job No./Report No TR2524633-RV1

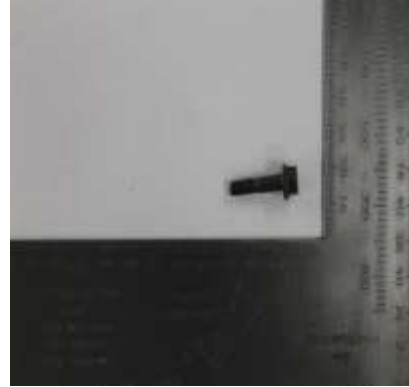
Date: 28 August 2024

Page 99 of 104

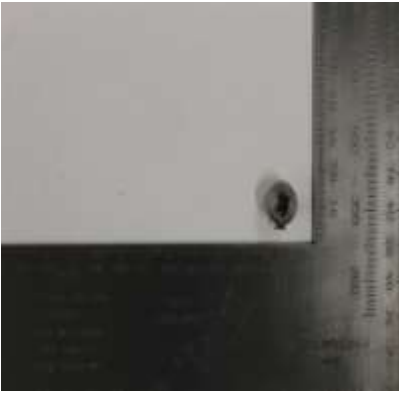
8.7



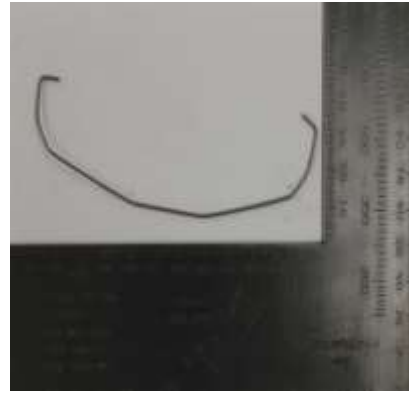
8.8



8.9



8.10



8.11



8.12



TEST REPORT

Job No./Report No TR2524633-RV1

Date: 28 August 2024

Page 100 of 104

8.13



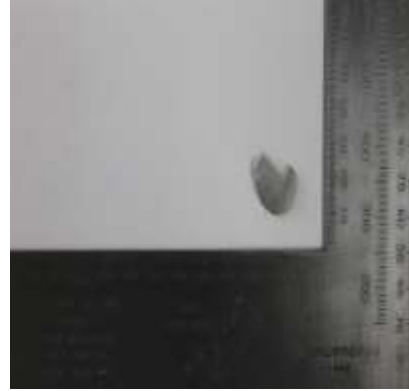
8.14



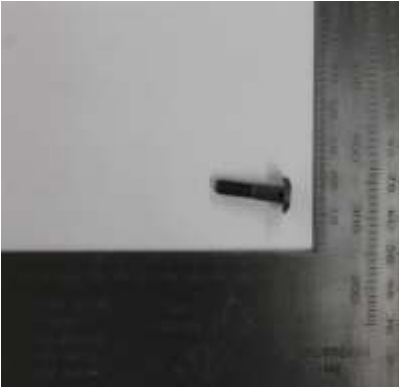
8.15



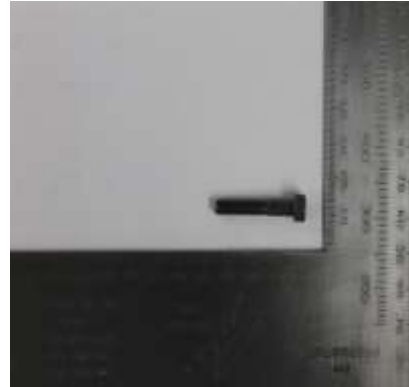
8.16



8.17



8.18



TEST REPORT

Job No./Report No TR2524633-RV1

Date: 28 August 2024

Page 101 of 104

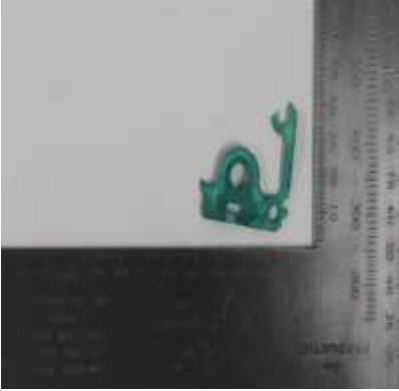
8.19



8.20



8.21



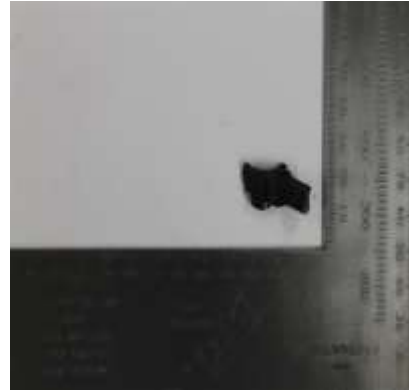
8.22



8.23



8.24



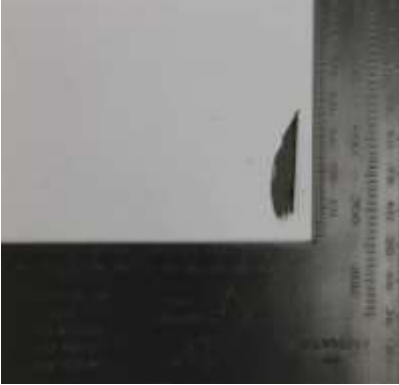
TEST REPORT

Job No./Report No TR2524633-RV1

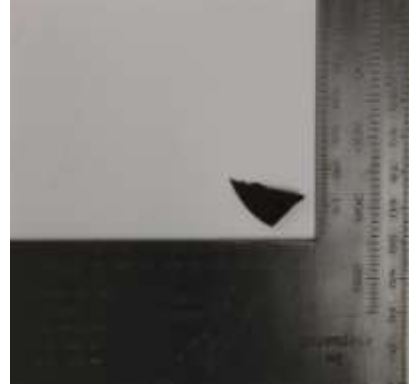
Date: 28 August 2024

Page 102 of 104

8.25



8.26



8.27



8.28



8.29



8.30



TEST REPORT

Job No./Report No TR2524633-RV1

Date: 28 August 2024

Page 103 of 104

8.31



8.32



8.33



8.34



8.35



8.36



TEST REPORT

Job No./Report No TR2524633-RV1

Date: 28 August 2024

Page 104 of 104

8.37



8.38



8.39



* * *

End of Test Report

* * *